

**800x  
1600 mm**



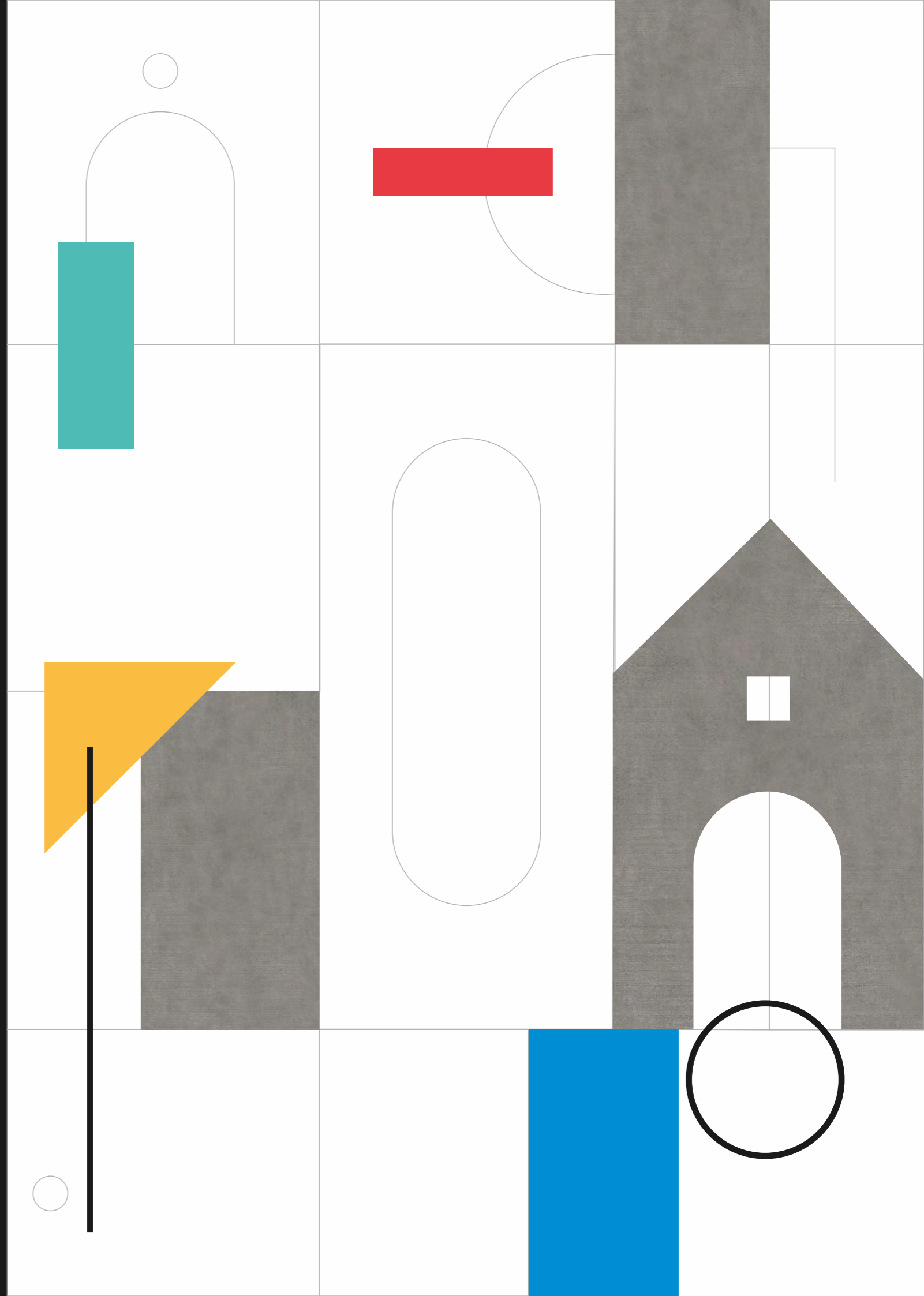
***NATURE  
IS OUR HOME***





# HOMIE OF CAR- VING

Mix Styles Of Carving





# A SHAD DOW OF MORE FADES

MIXING OF FIVE  
ELEMENT OF  
THE SURFACE

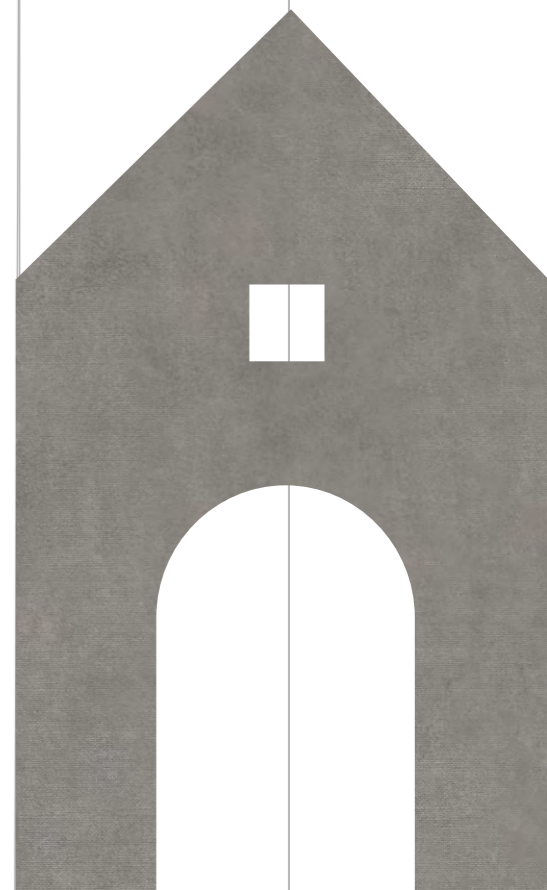
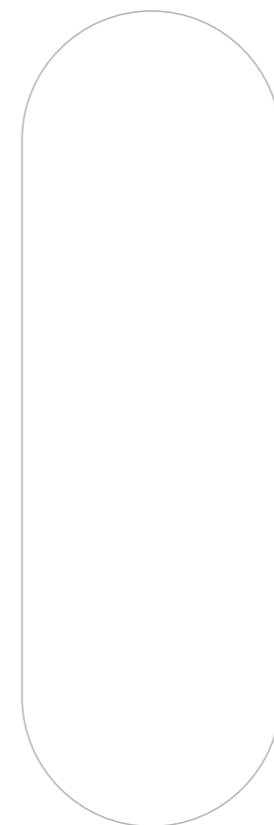
COMBINATION  
OF ELEMENT  
& SURFACE

**A  
NEW  
PHI  
LO  
SO  
PHY**

FOR CERAMICS

**CAR-  
VING**

STRUCTURE OR OBJECT,  
FROM TOWN PLANNING,  
URBAN DESIGN.



**FOSTER** SERIES



BIANCO



GRIS



GREY



NERO



BEIGE

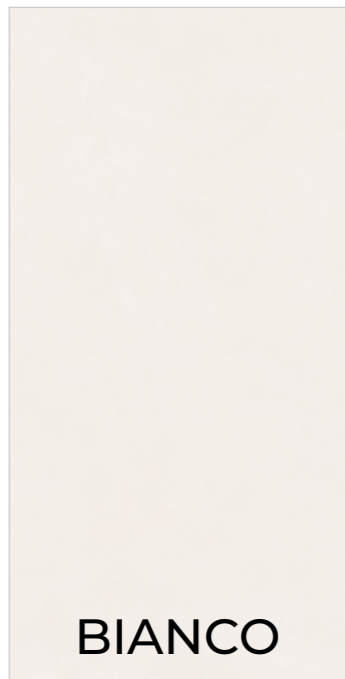


TAUPE



GREEN

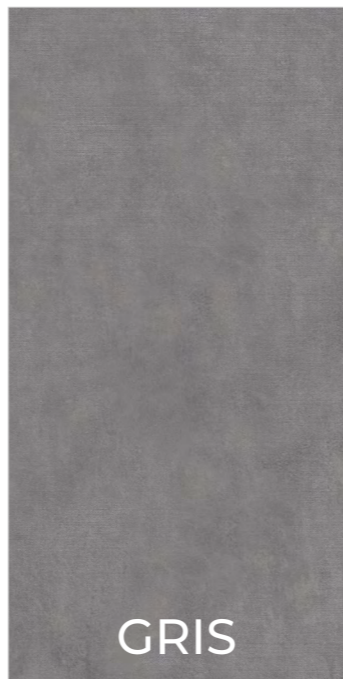
**ROCK LINEN** SERIES



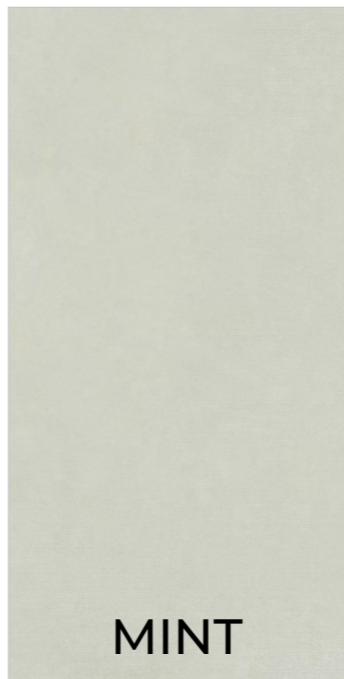
BIANCO



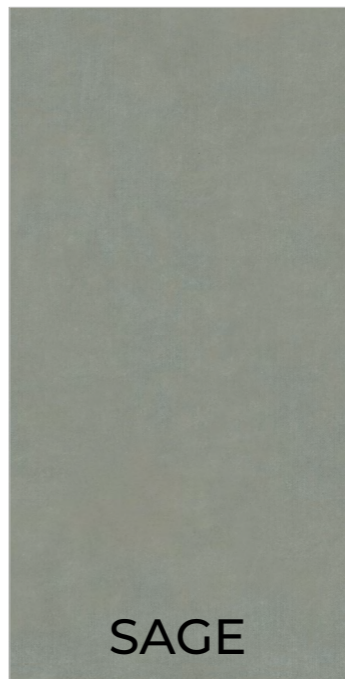
GREY



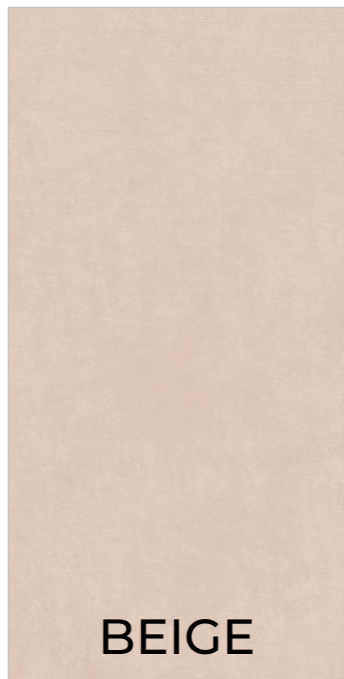
GRIS



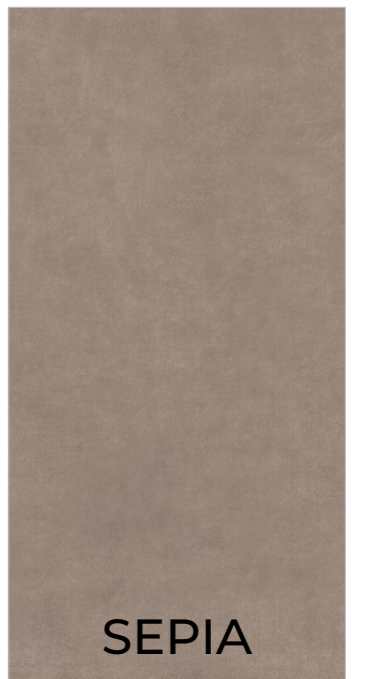
MINT



SAGE



BEIGE



SEPIA

PRODUCTS INDEX





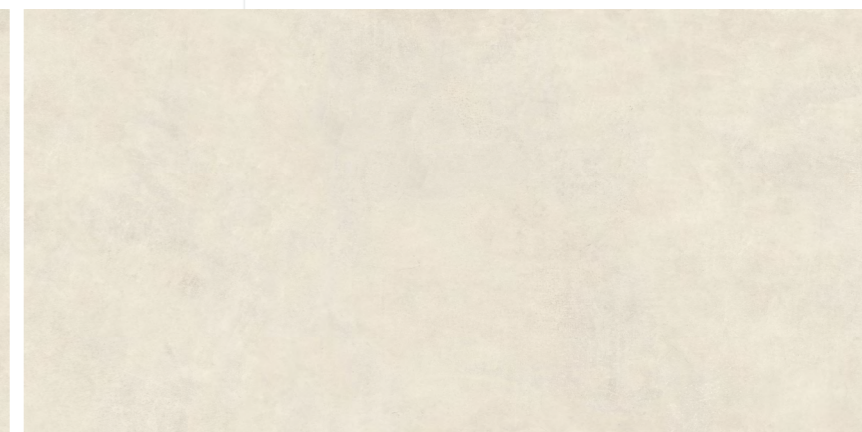
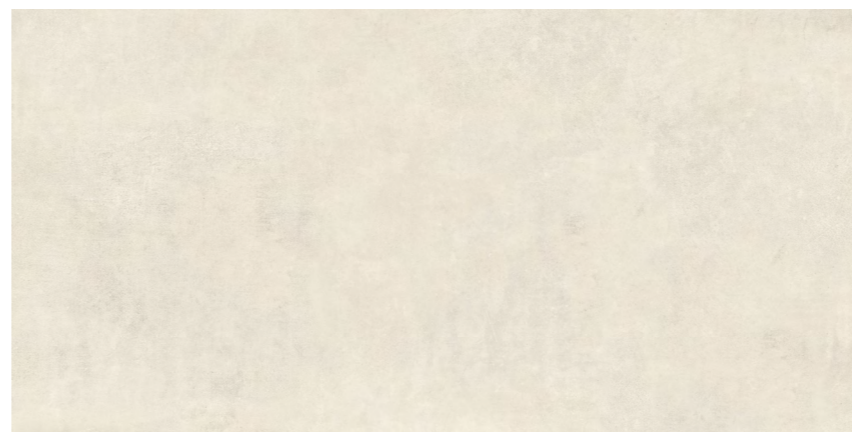


# ***FOSTER BIANCO***

**800x1600 mm  
Carving**

**04 - Random**

Touch for Virtual







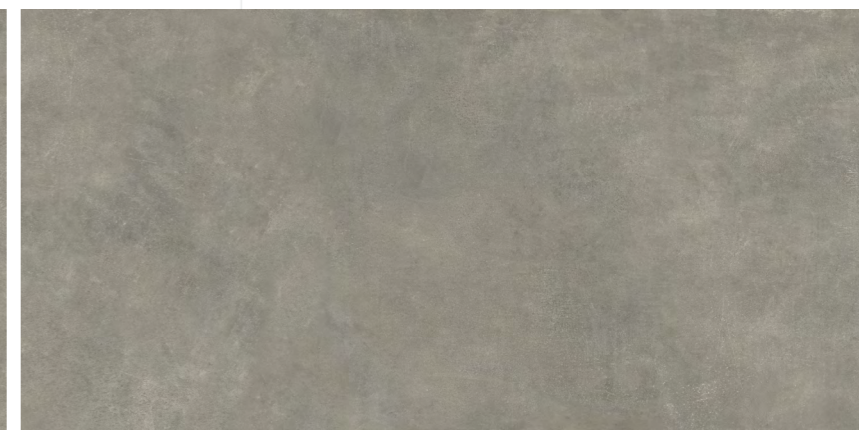
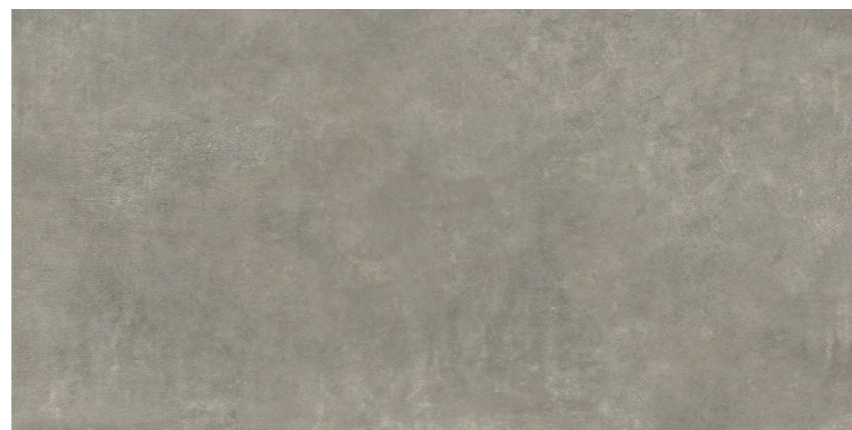
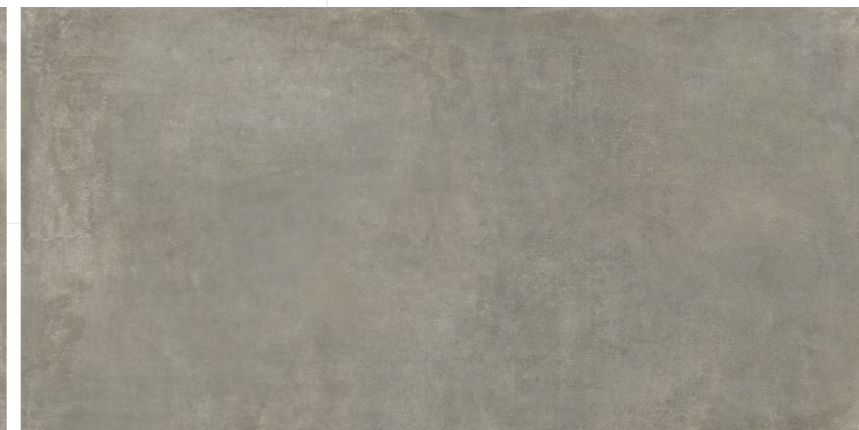


# ***FOSTER GRIS***

**800x1600 mm  
Carving**

**04 - Random**

Touch for Virtual





REBELLA  
HOTEL

REBELLA HOTEL  
REBELLA HOTEL  
REBELLA HOTEL

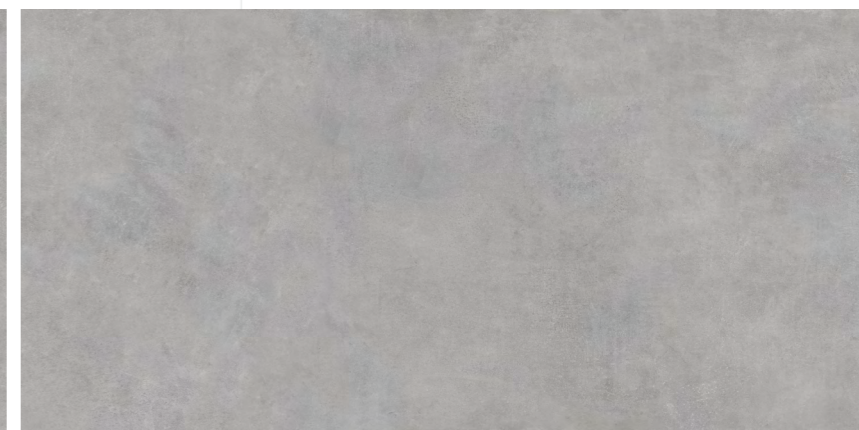
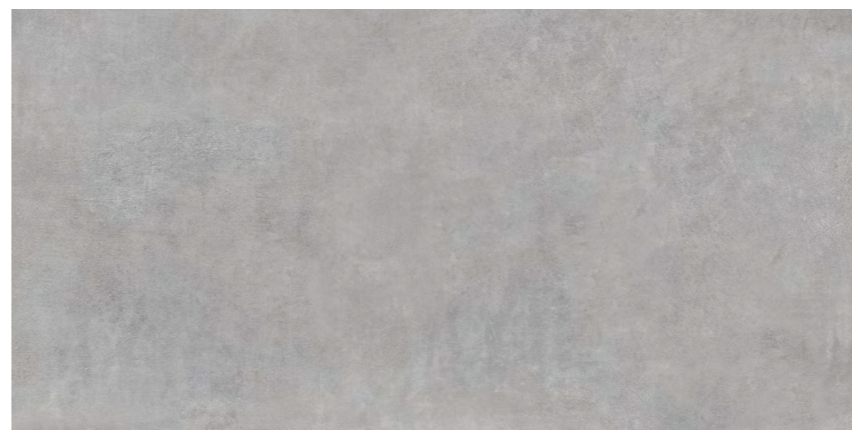
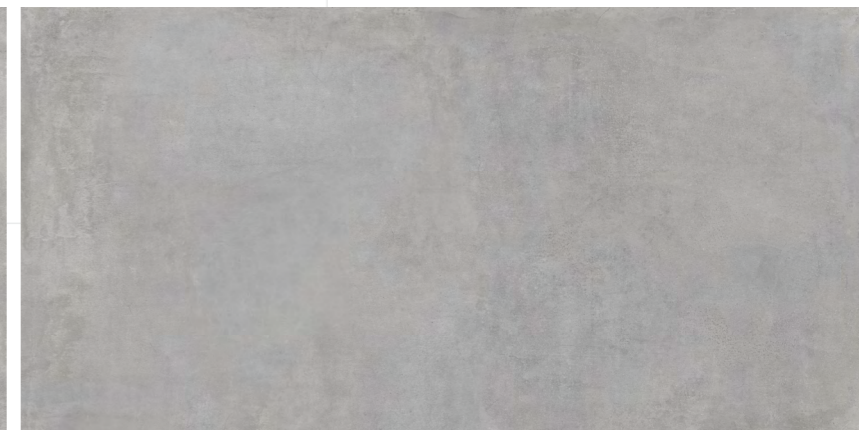


# ***FOSTER GREY***

**800x1600 mm  
Carving**

**04 - Random**

Touch for Virtual





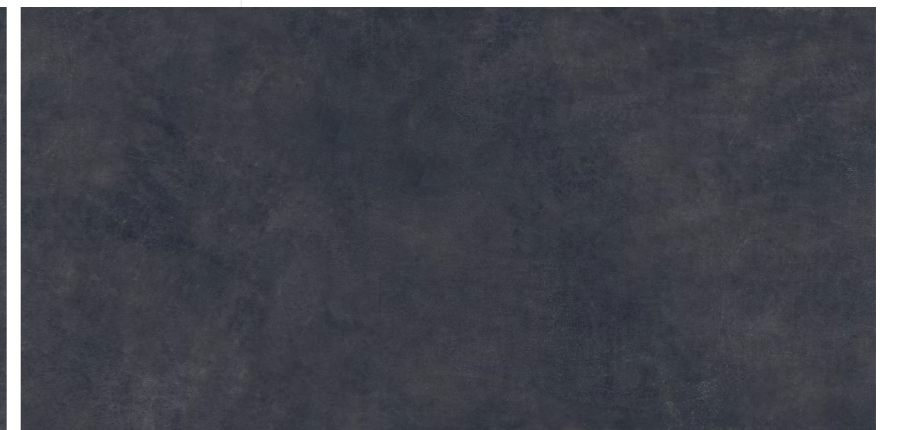
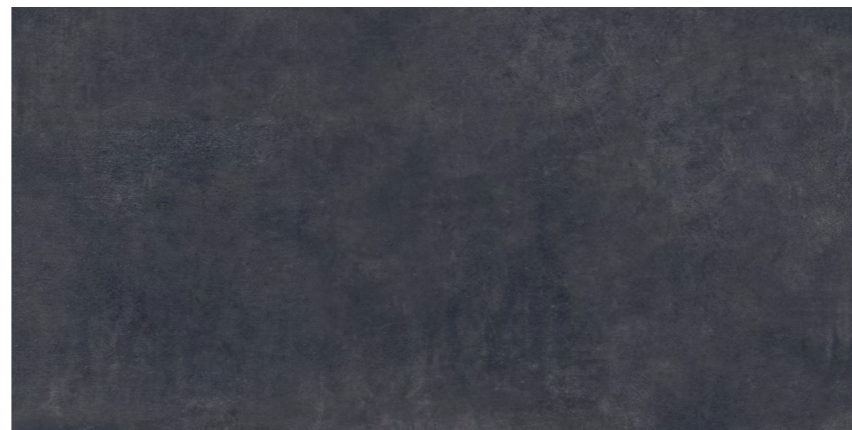
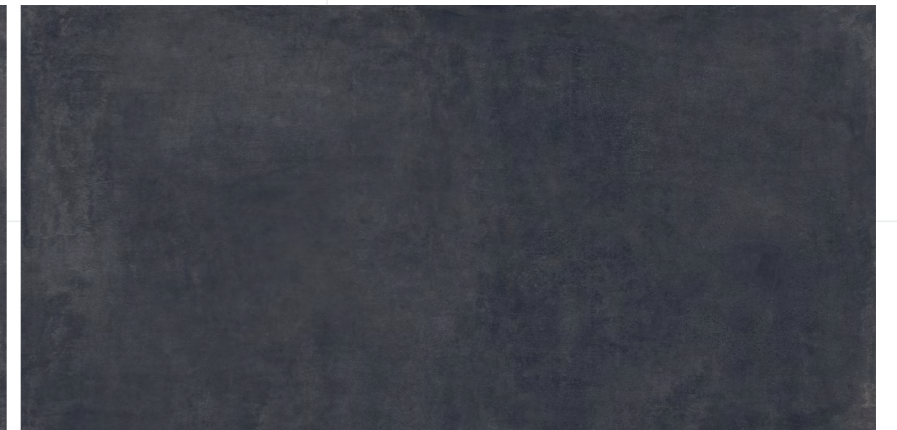
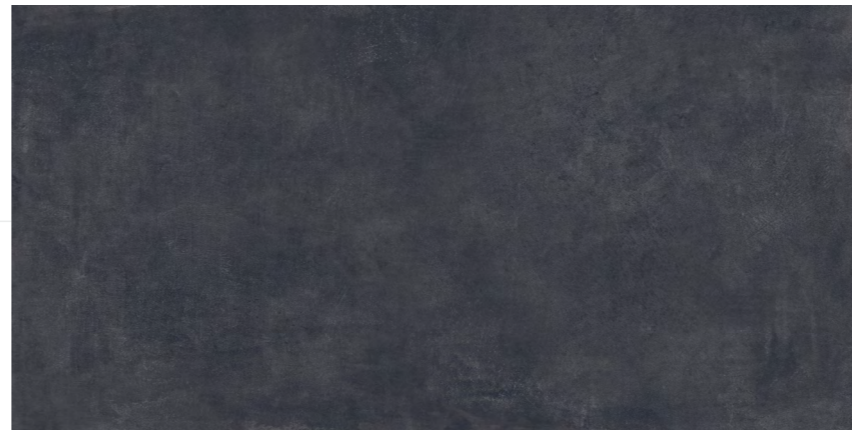


# ***FOSTER NERO***

**800x1600 mm  
Carving**

**04 - Random**

Touch for Virtual





*Mandarin Orientalc*

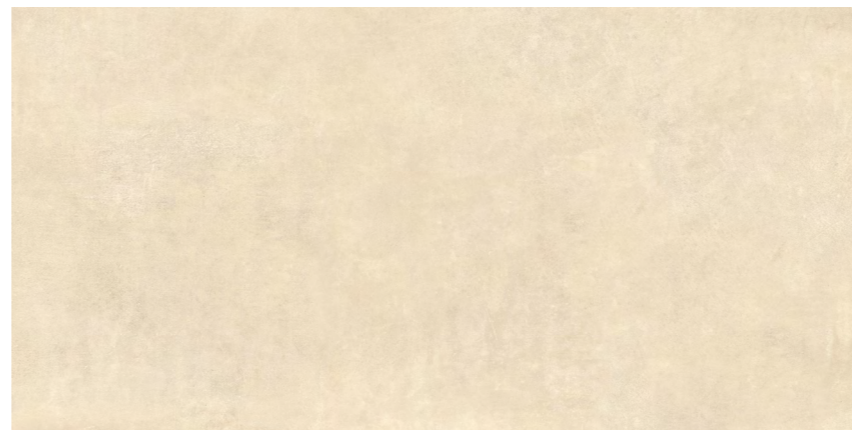


# ***FOSTER BEIGE***

**800x1600 mm  
Carving**

**04 - Random**

Touch for Virtual







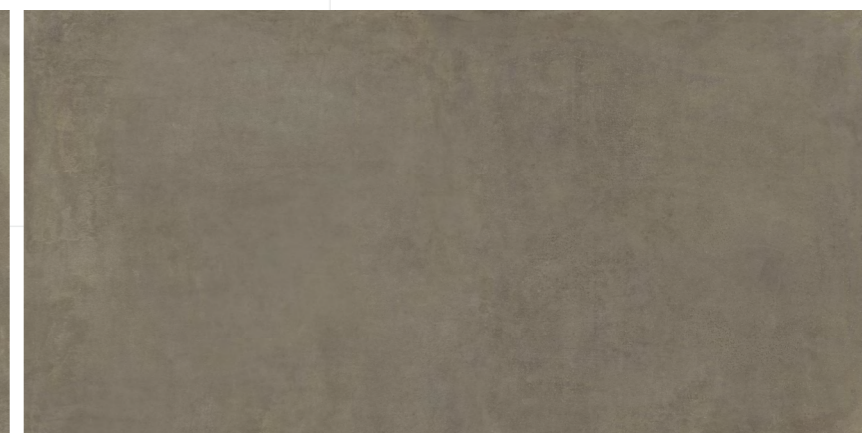


# ***FOSTER TAUPE***

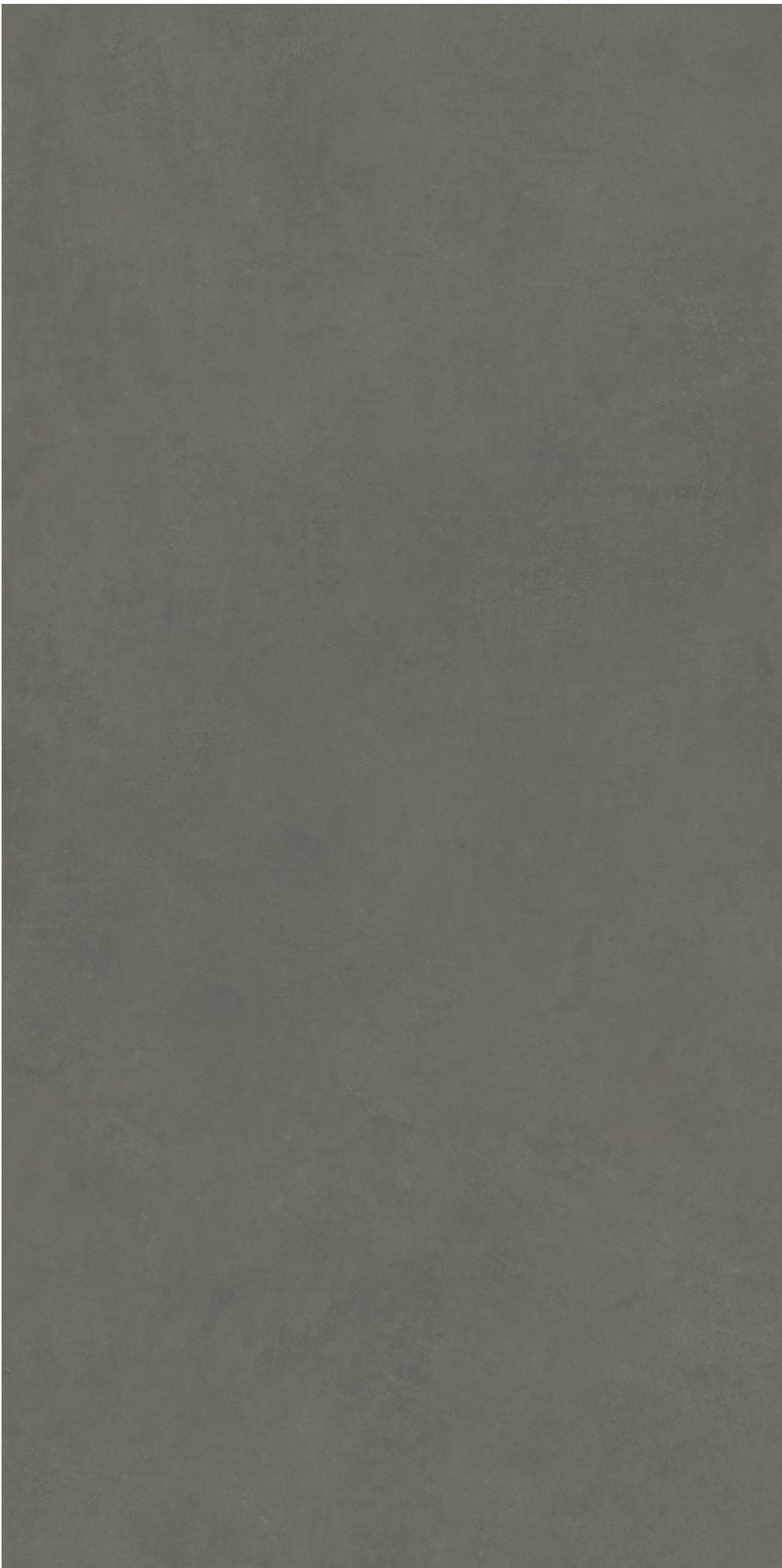
**800x1600 mm  
Carving**

**04 - Random**

Touch for Virtual







# ***FOSTER GREEN***

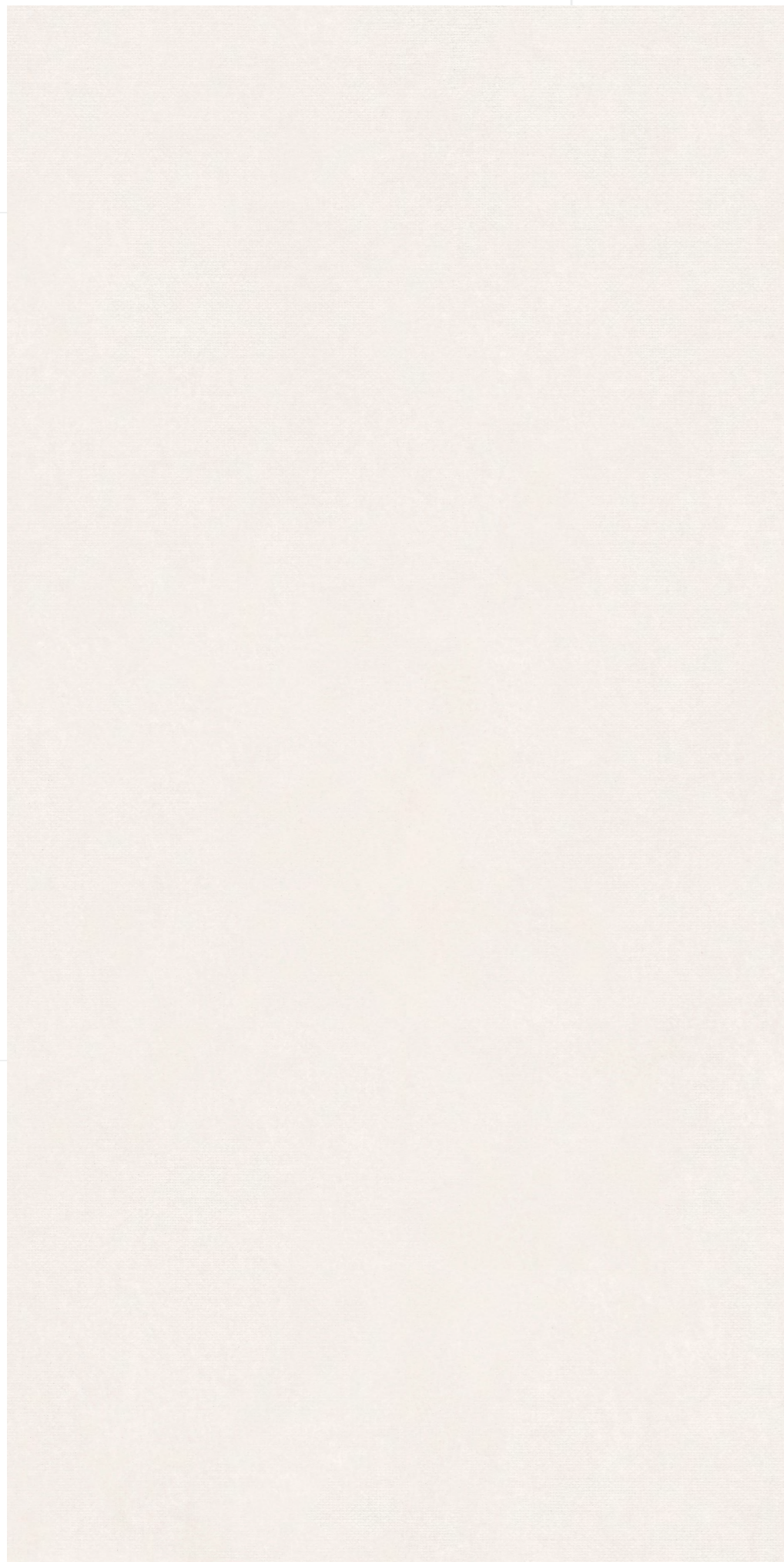
**800x1600 mm  
Carving**

**04 - Random**

Touch for Virtual





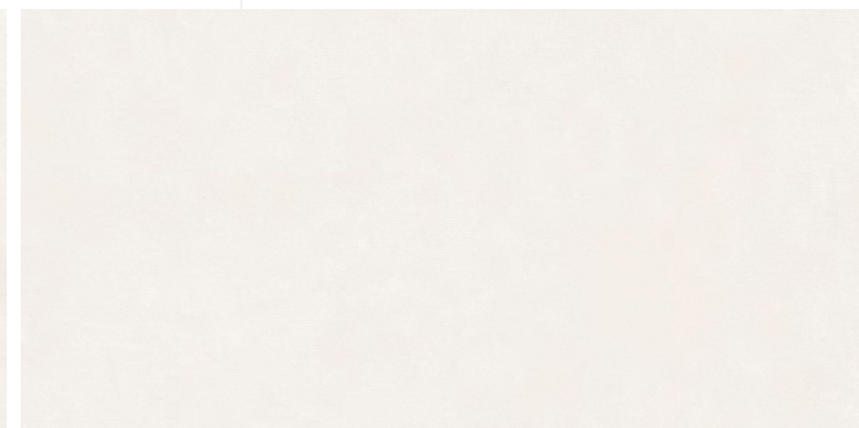
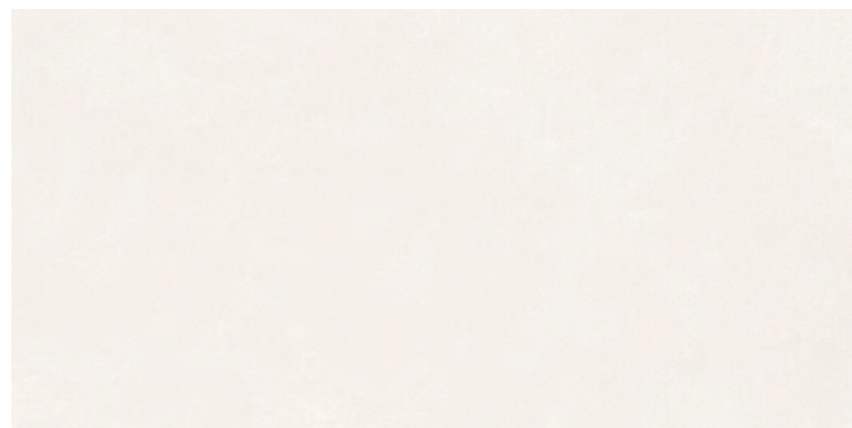
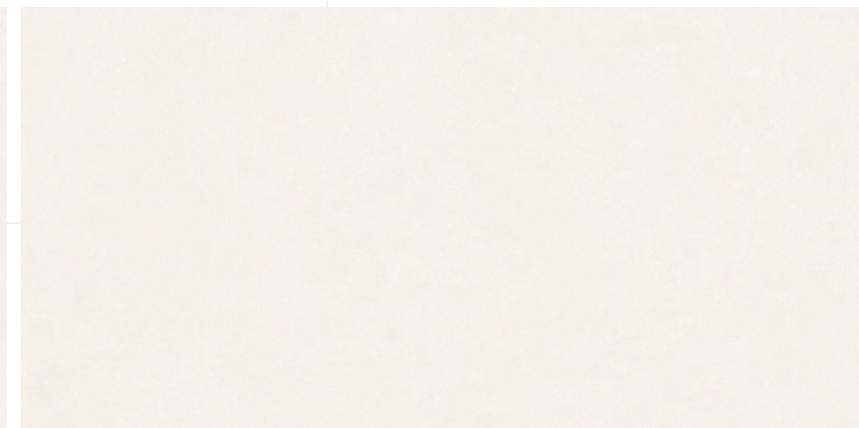
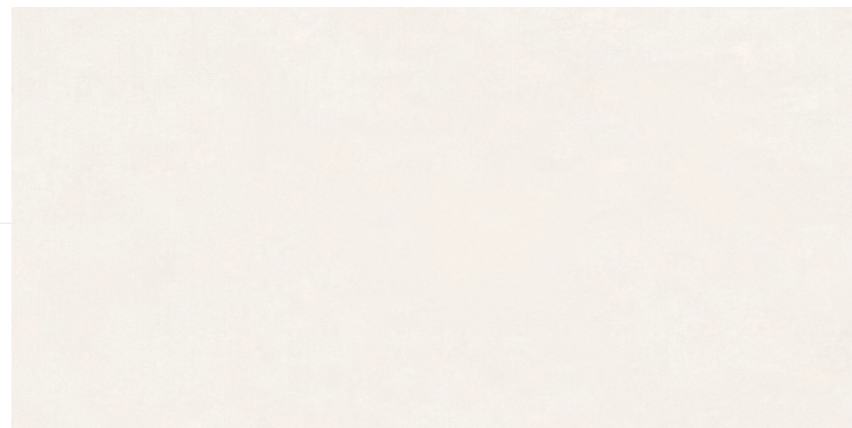


# ***ROCK LINEN BIANCO***

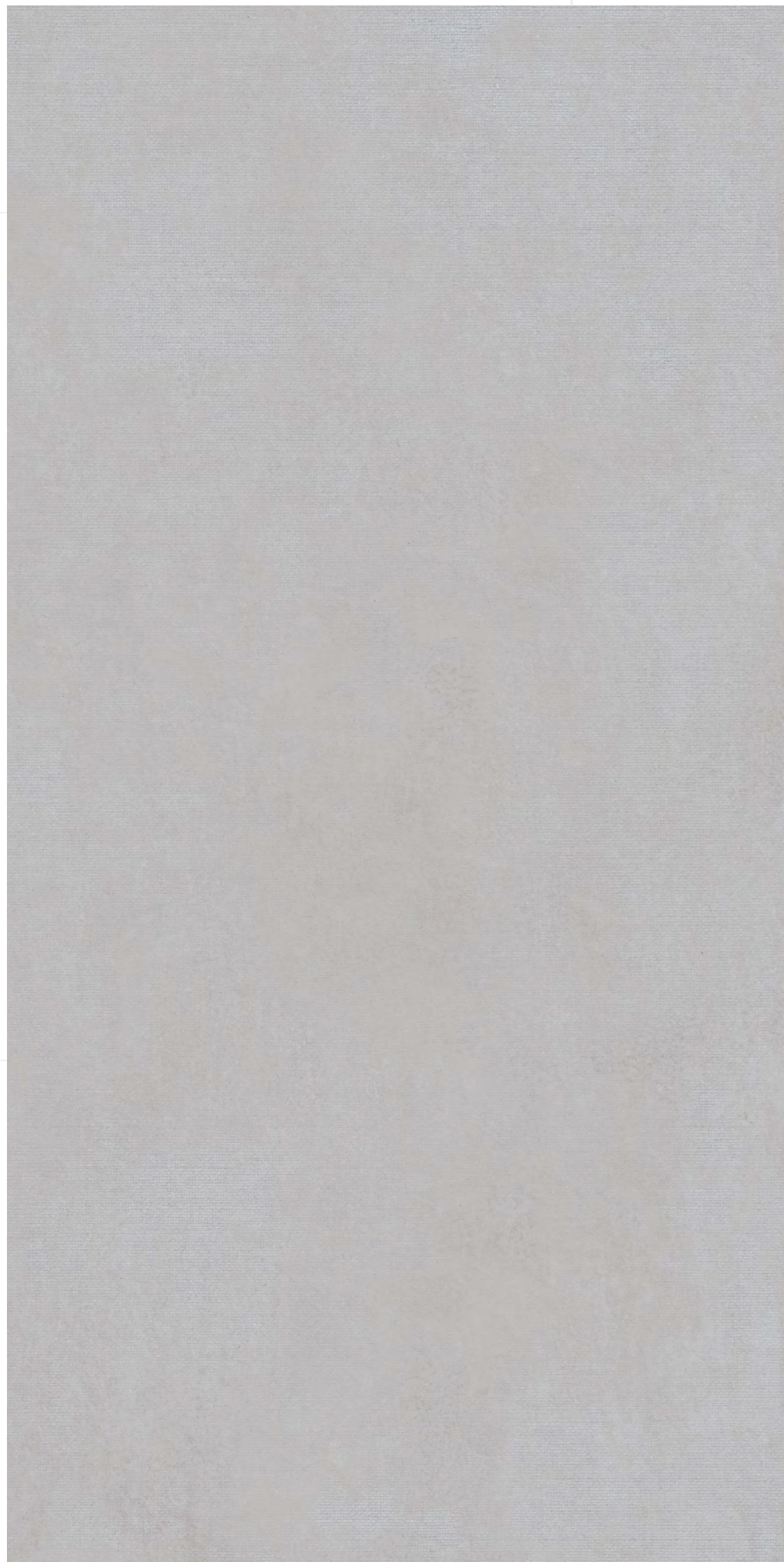
**800x1600 mm  
Carving**

**04 - Random**

Touch for Virtual





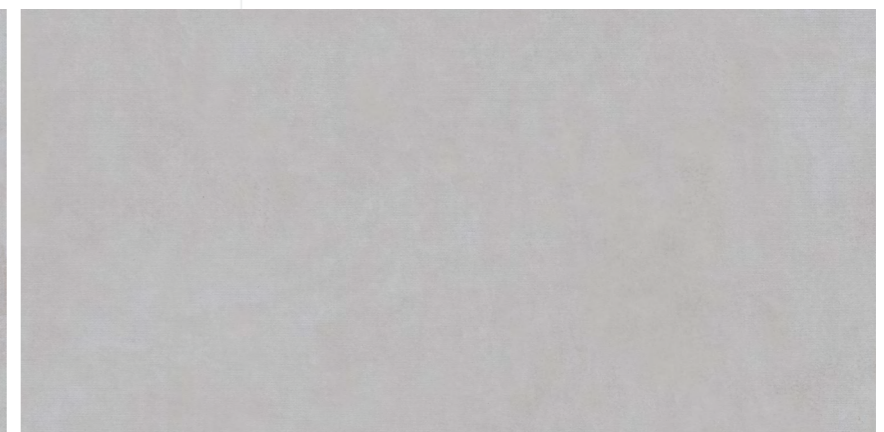
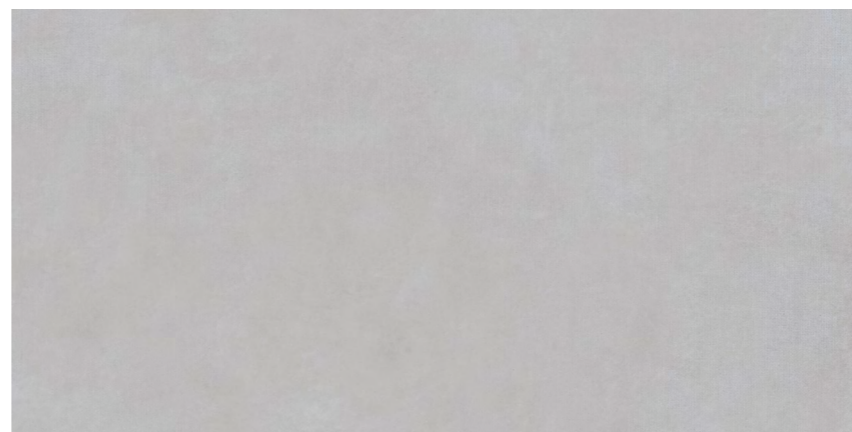
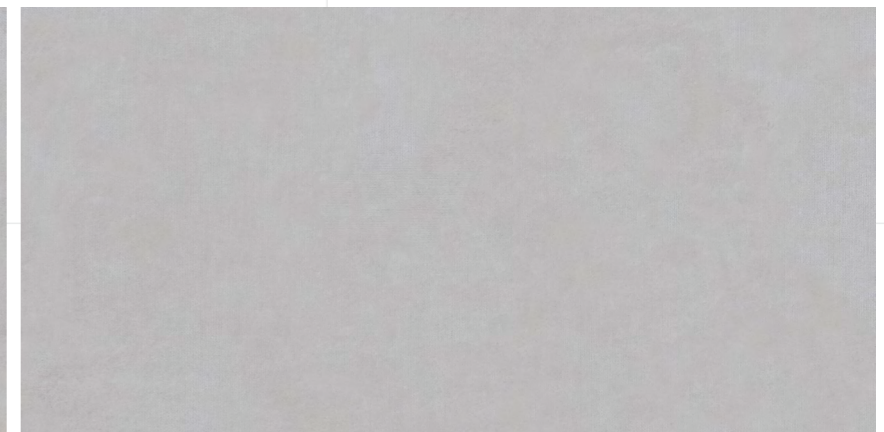
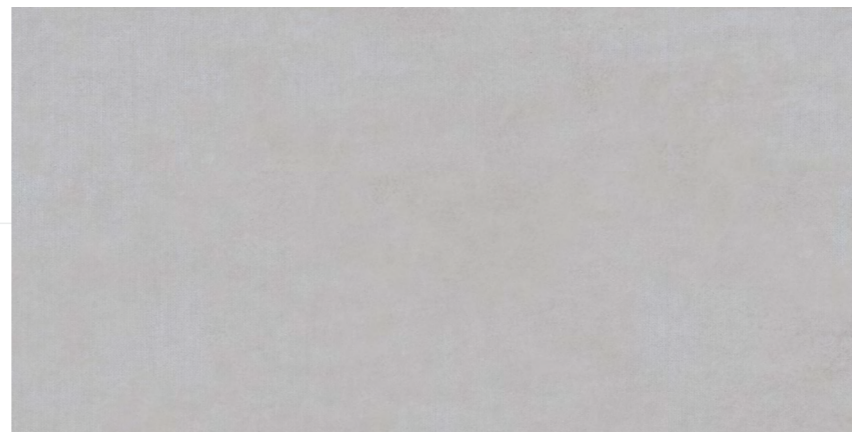


# ***ROCK LINEN GREY***

**800x1600 mm  
Carving**

**04 - Random**

Touch for Virtual





Skyline  
Hotel



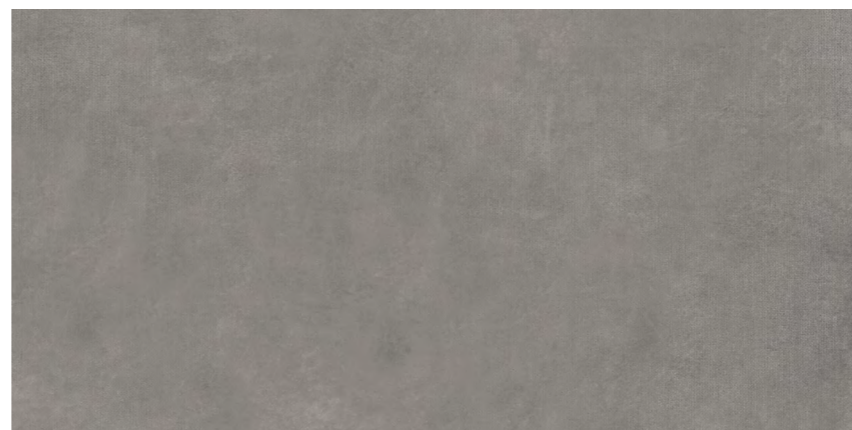
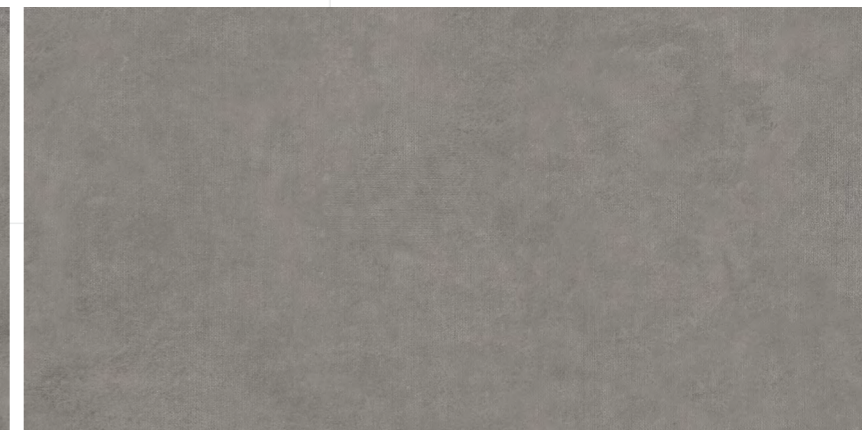


# ***ROCK LINEN GRIS***

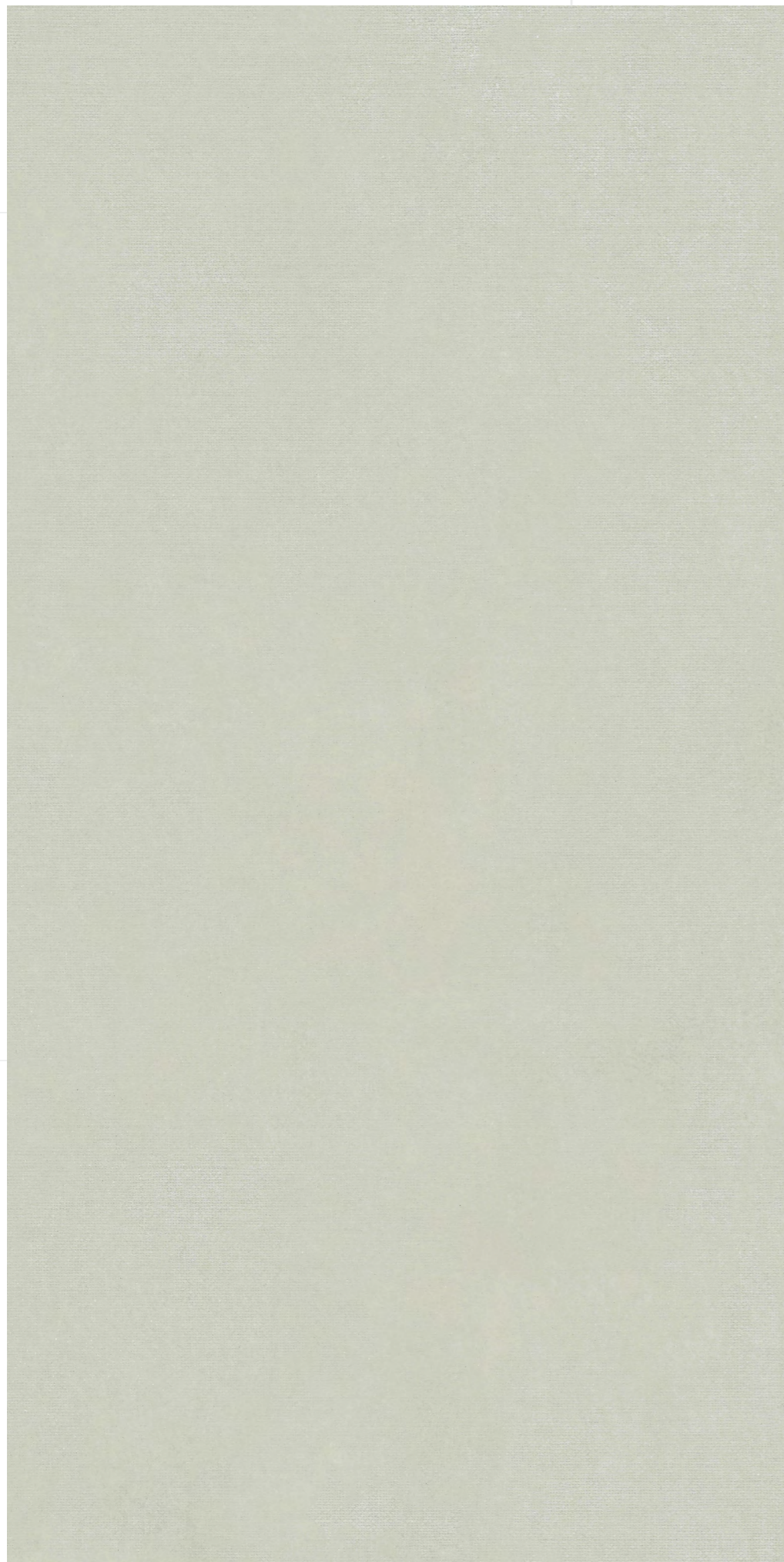
**800x1600 mm  
Carving**

**04 - Random**

Touch for Virtual





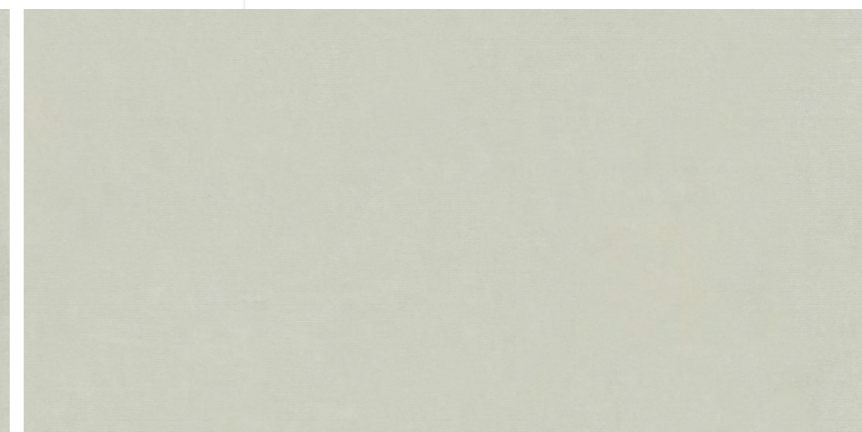
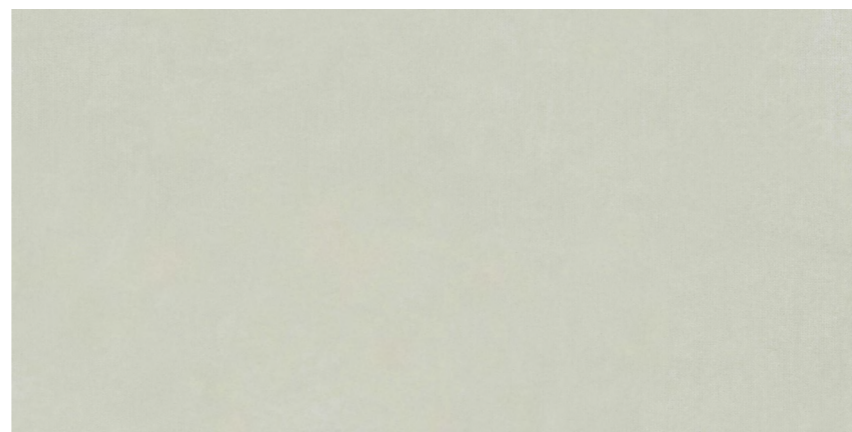
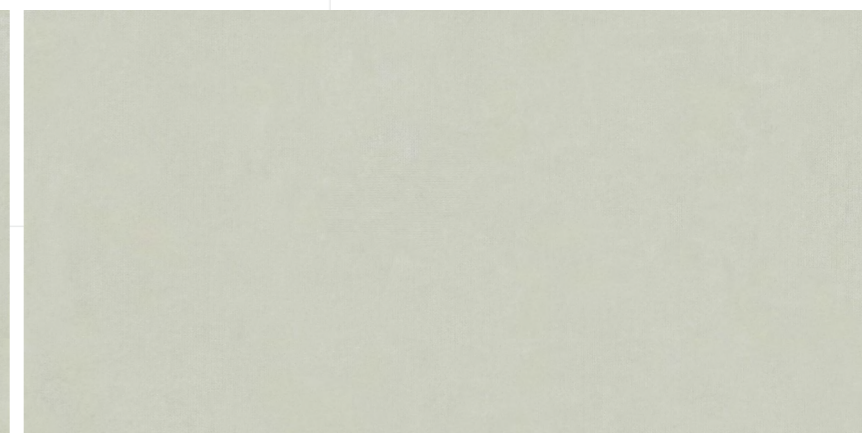
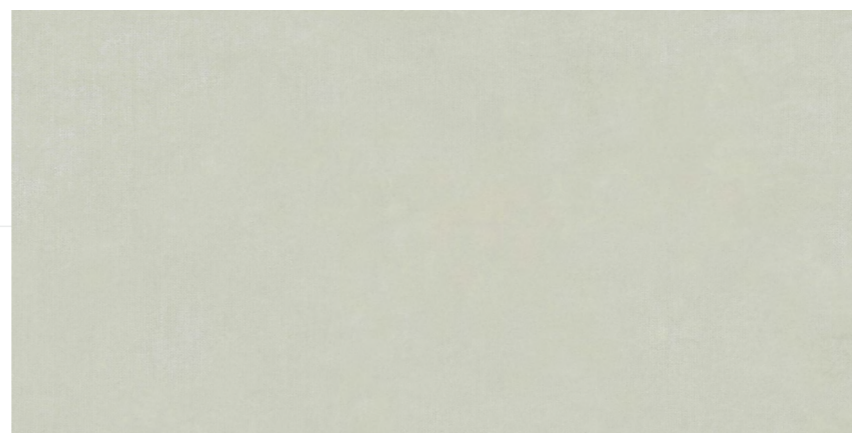


# ***ROCK*** ***LINEN MINT***

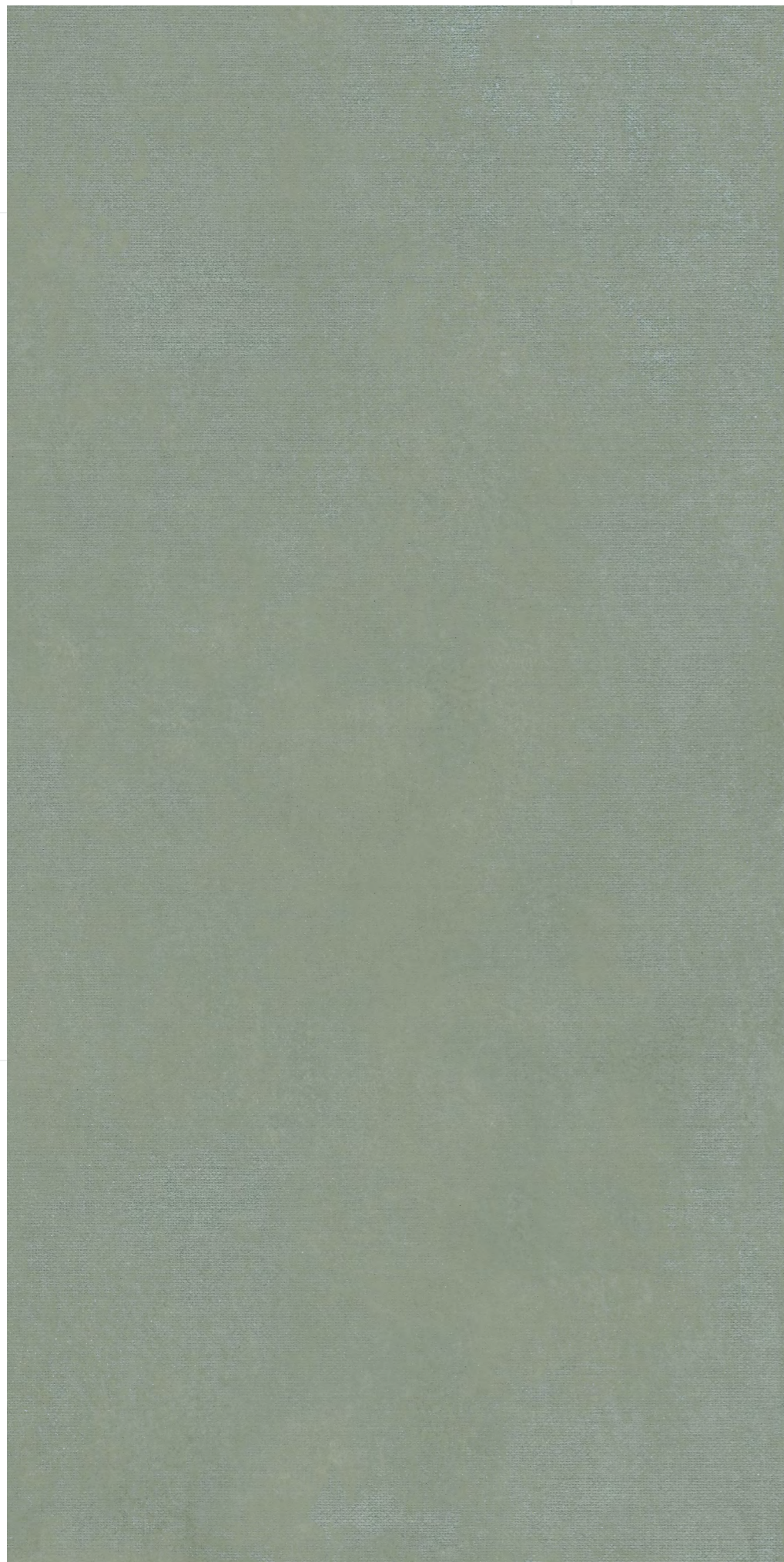
**800x1600 mm**  
**Carving**

**04 - Random**

Touch for Virtual





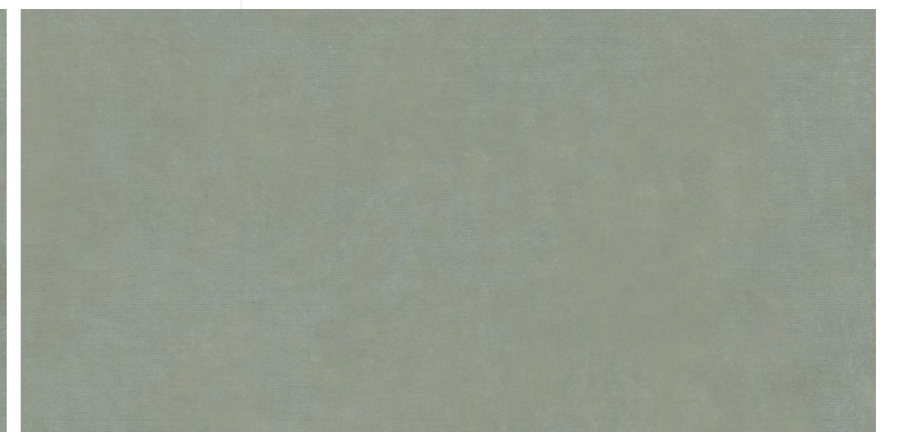
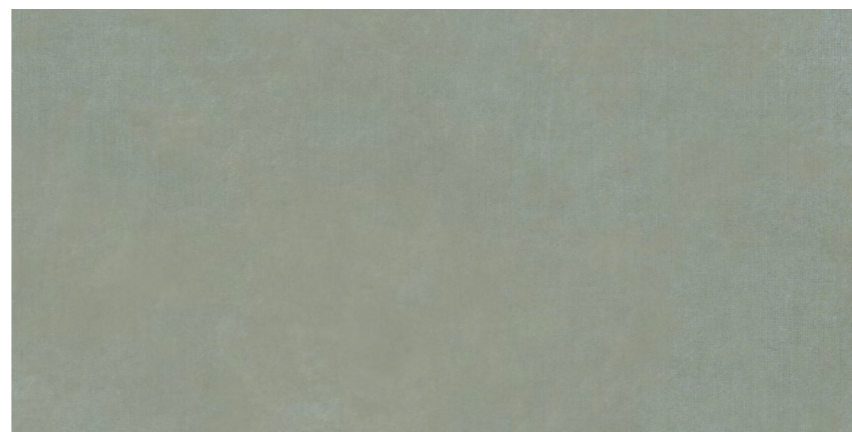
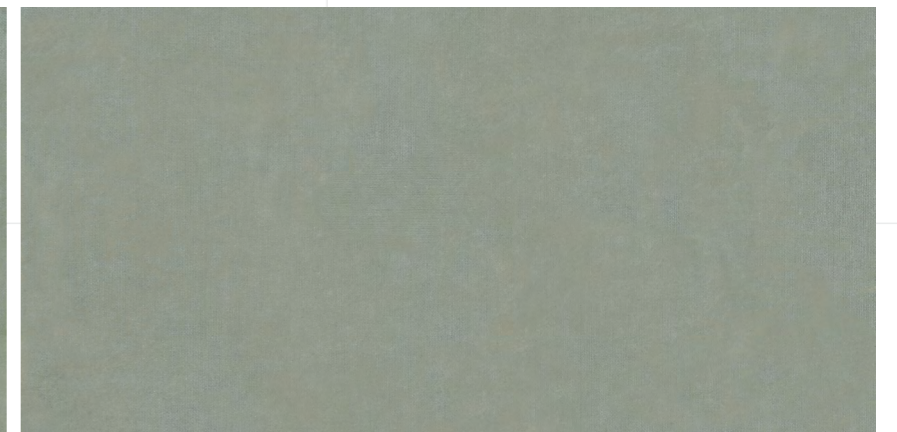


# ***ROCK LINEN SAGE***

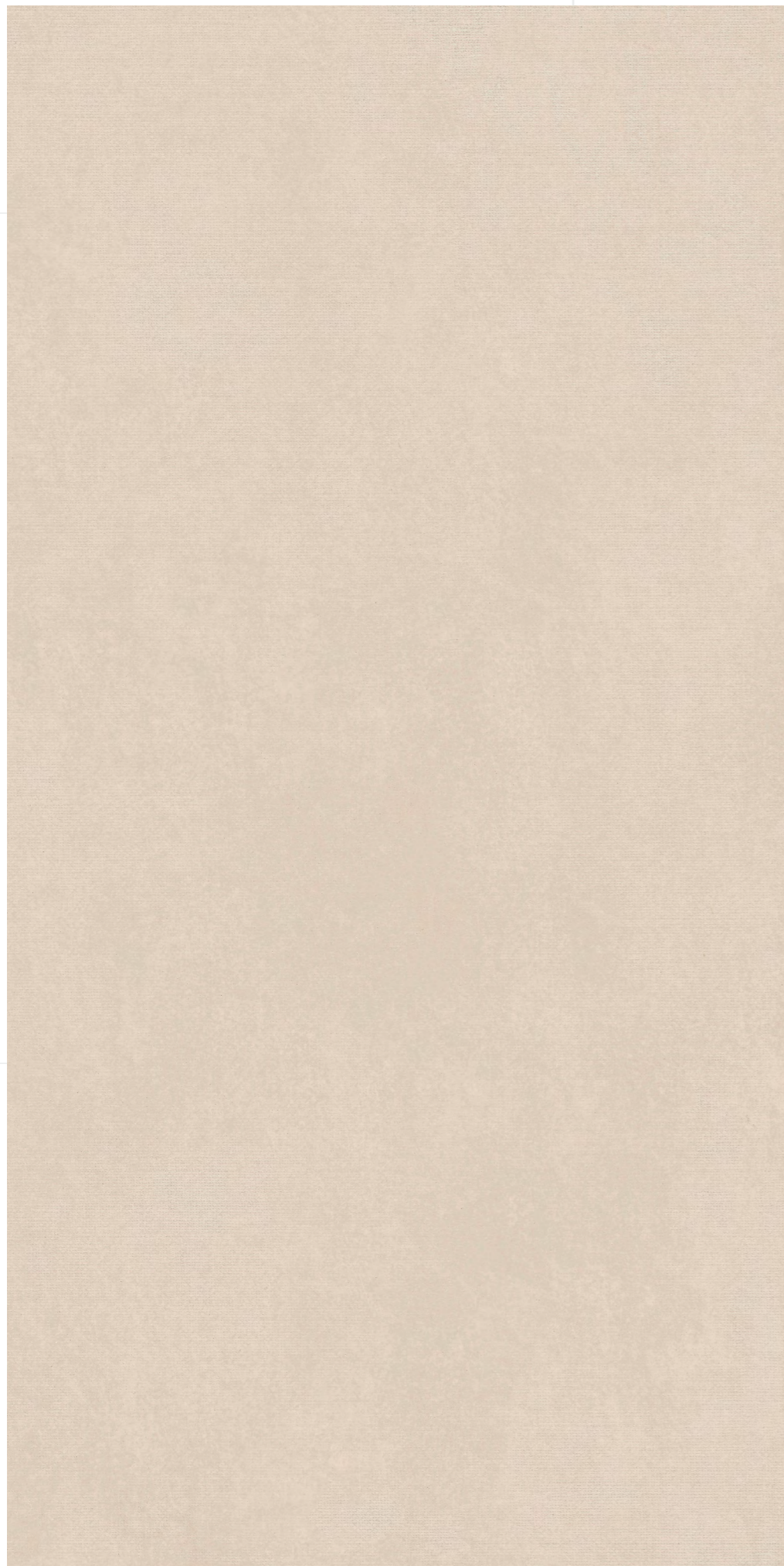
**800x1600 mm  
Carving**

**04 - Random**

Touch for Virtual





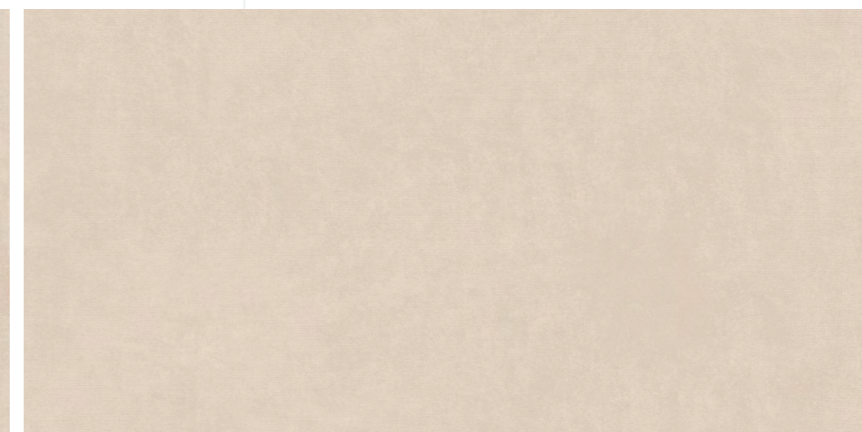
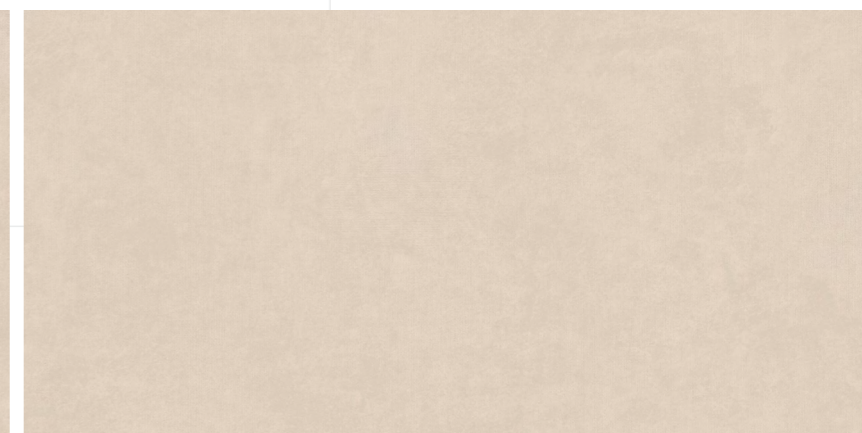


# ***ROCK LINEN BEIGE***

**800x1600 mm  
Carving**

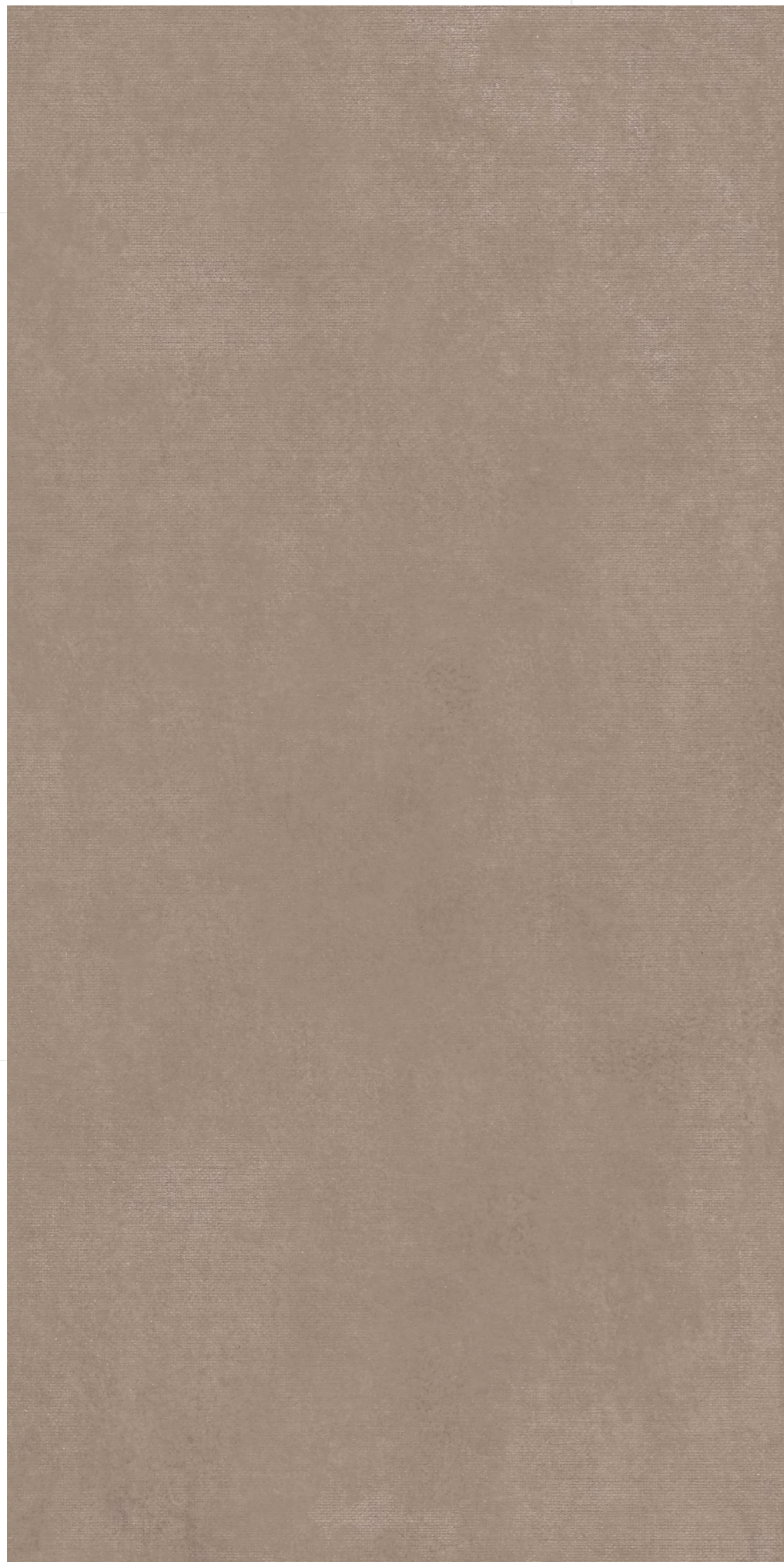
**04 - Random**

Touch for Virtual







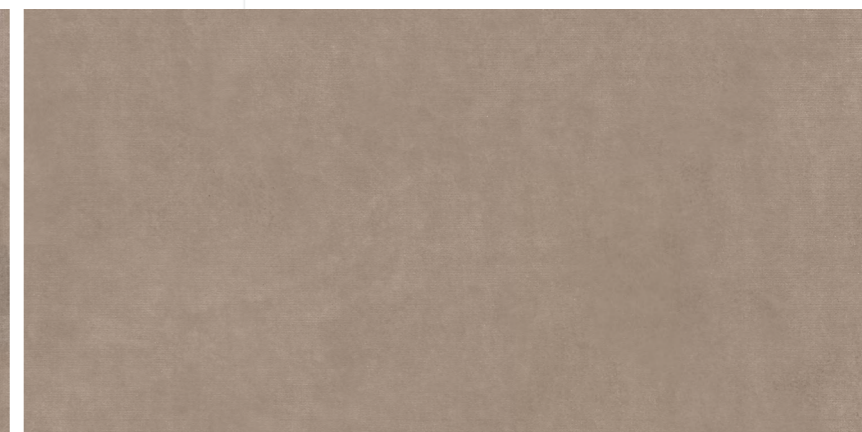
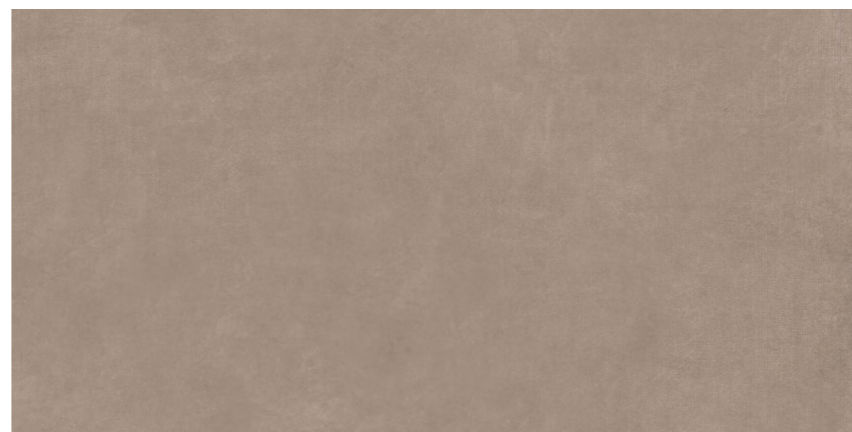
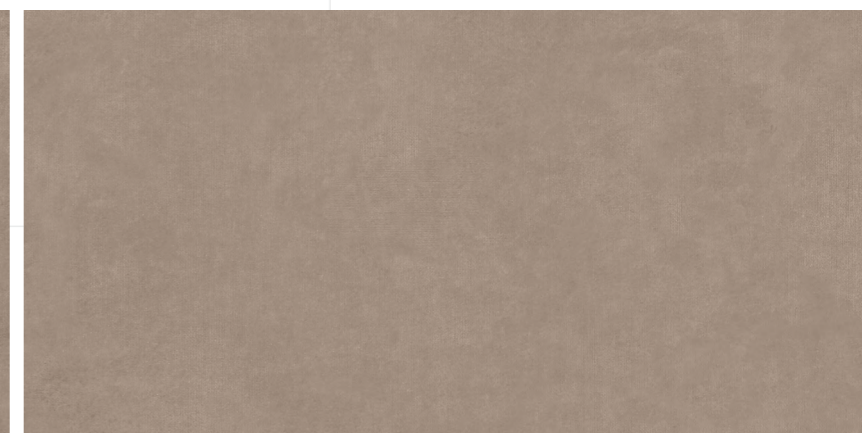
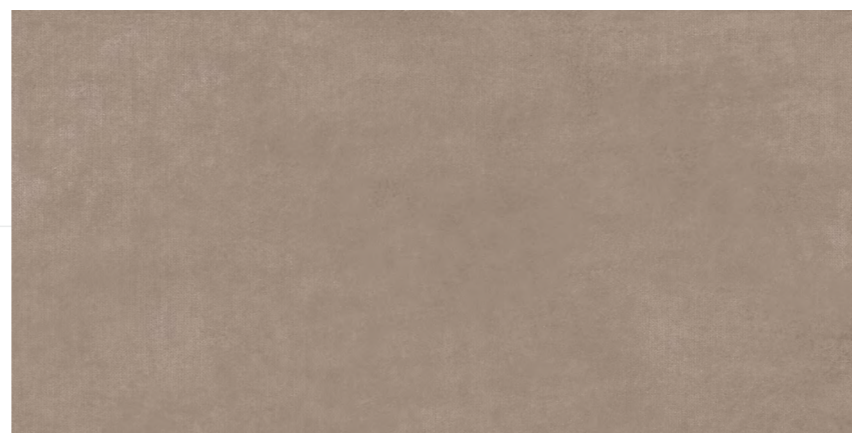


***ROCK***  
***LINEN SEPIA***

**800x1600 mm**  
**Carving**

**04 - Random**

Touch for Virtual



# Technical Specification

CHARACTERISTICS	STANDARD AS PER ISO-13006/En14411 GROUP	VALUES	TEST METHOD
<b>REGULATORY PROPERTIES</b>			
Deviation in Lenth & Width	0.50%	0.20%	ISO - 10545-2
Deviation in Thickness	0.50%	0.50%	ISO - 10545-2
Straightness of Sides	0.50%	0.20%	ISO - 10545-2
Rectangularity	0.50%	0.20%	ISO - 10545-2
Surface Flatness	0.50%	0.20%	ISO - 10545-2
Color Difference	Unaltered	No Change	ISO - 10545-16
Glossiness	As per Mfg.	>90%	Glossmeter
<b>STRUCTURAL PROPERTIES</b>			
Water Absorption	<0.05%	<0.05%	ISO - 10545-3
Apparent Density	>2.00 g/cc	>2.10 g/cc	DIN 51082
<b>MASSIVE MECHANICAL PROPERTIES</b>			
Modulus of Repture	Min 35N/MM2	Min 40N/MM2	ISO - 10545-4
Breaking Strength	Min. 1300 N	Min. 2000 N	ISO - 10545-4
Impact Resistance	As per Mfg.	Min. 0.55	ISO - 10545-5
<b>SURFACE MECHANICAL PROPERTIES</b>			
Surface Abrasion Resistance	As per Mfg.	Min. class 3	ISO - 10545-7
Moh's Hardness	As per Mfg.	Min. class 4	EN 101
<b>THERMO HYGROMETRIC PROPERTIES</b>			
Frost Resistance	No Damage	No Damage	ISO - 10545-12
Thermal Shock Resistance	No Damage	No Damage	ISO - 10545-09
Moisture Expansion	Nil	Nil	ISO - 10545-10
Thermal Expansion	Max 9.0x10 <sup>-6</sup>	Max 6.5x10 <sup>-6</sup>	ISO - 10545-08
Crazing Resistance	As per Mfg.	Min 10 Cycle	ISO - 10545-11
<b>CHEMICAL PROPERTIES</b>			
Chemical Resistance	No Damage	No Damage	ISO - 10545-13
Stain Resistance	Resistant	Resistant	ISO - 10545-14
<b>SAFETY PROPERTIES</b>			
Slip Resistance	As per Mfg.	>0.40	ISO - 10545-17
Fire Resistance	As per Mfg.	Fire Proof	N.A.

## Packing Detail

SIZE (in mm)	THICKNESS APPROX	PIECES / PER BOX	COVERAGE AREA IN SQ. FT	BOX WEIGHT ( APPROX. )
800X1600	9 MM	2	27.55	52 KG