

STONEM

FAIR
C

collection
2023/24

memories of nature
in **human live**





welcoming

The joy that beautiful things bring, by making our homes more welcoming and improving our lives.



essences




collection
2023/24



STONECRAFT

collection



high performance architectural design



We strive to improve in each new project by creating spaces with emotion and character.

We are committed to detail at every level, which is why we offer you different ways of experiencing the brand – the latest one online! We've also given a lot of thought about how to enhance the sales experience with your customers.

the most valuable resource deserves respect

800x1600mm
carving + matt surface

We get closer to supply sources, promoting national and European options. We encourage reuse and recycling. Defending the planet means looking ahead, ensuring also the future of our industry

Natural resources are a gift of which humanity must show himself worthy, taking care of them. To slow down unique and finite resources exploitation, we turn our commitment to a growing use of materials renewable and responsible.



introduction punch

Our ceramic makes colour tangible, creating a surface on which tactile and visual sensations are permanently contaminated. From every combination of colours and materials comes something new and surprising, theatre of always different emotions.





cotta
punch



give your
space a
personalized touch



**torano
bianco**

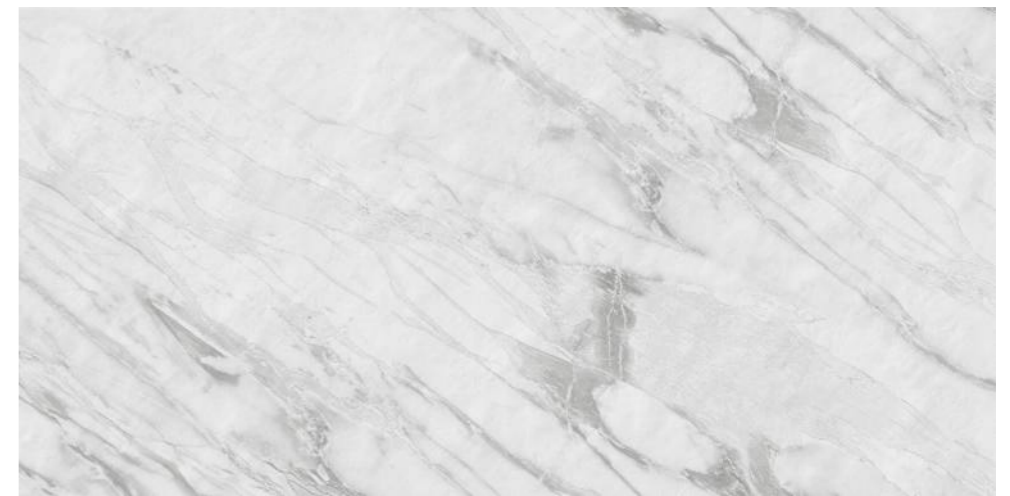
800x1600mm | Carving + Punch Surface | 04 Random

torano bianco

STONECRAFT
collection



Touch for Virtual
360°



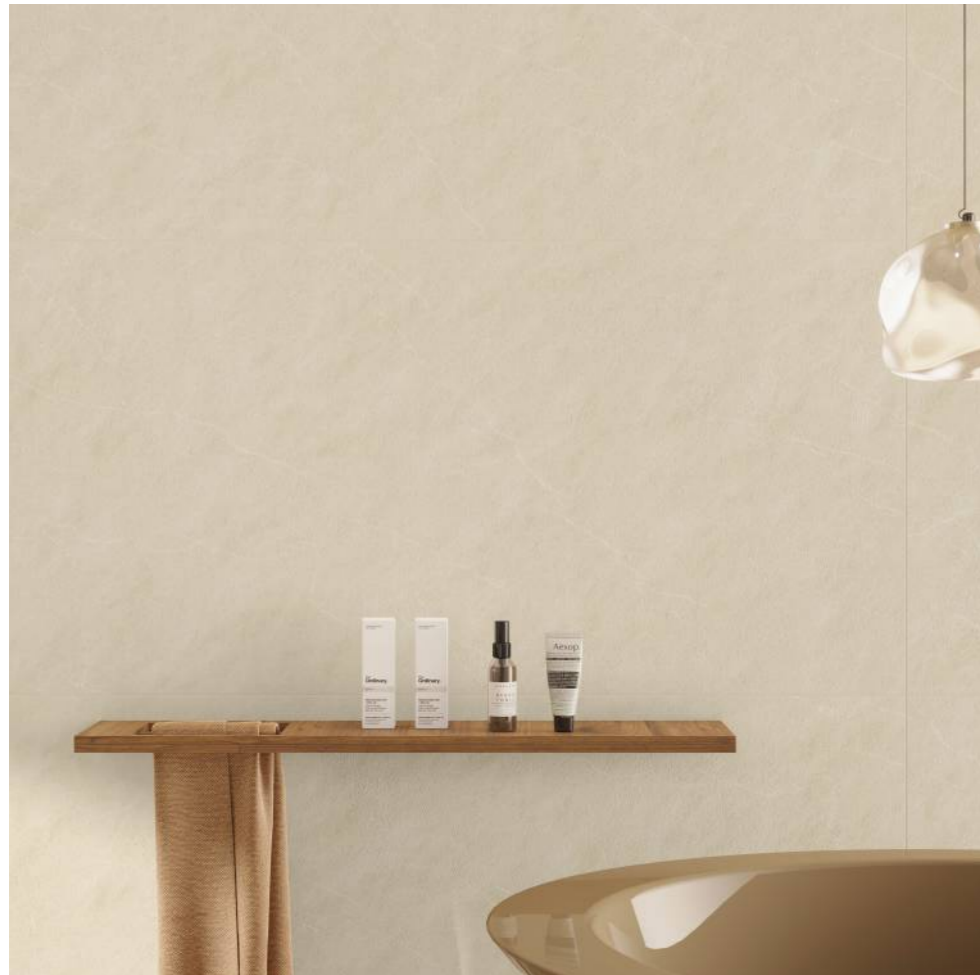


**tectonic
almond**

800x1600mm | Carving + Punch Surface | 04 Random

tectonic almond

STONECRAFT
collection



Touch for Virtual
360°





**tectonic
sand**

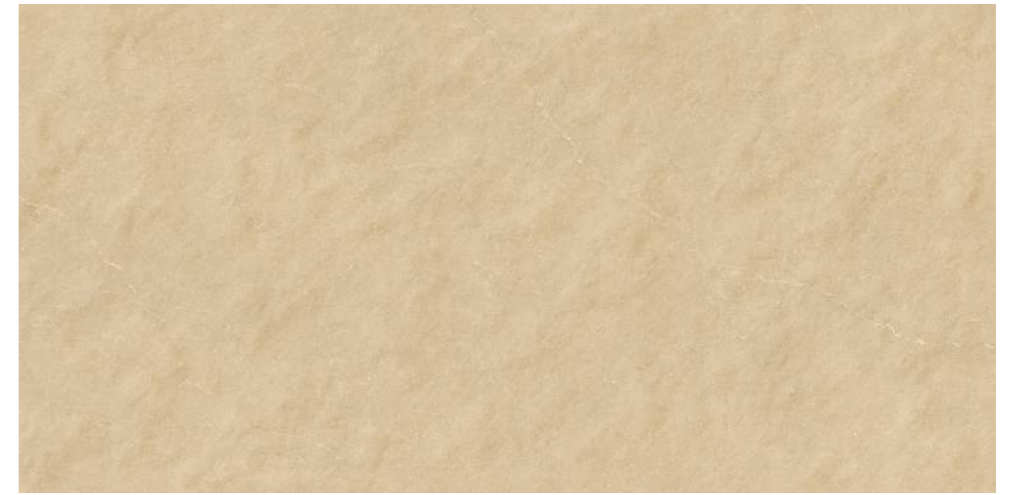
800x1600mm | Carving + Punch Surface | 04 Random

tectonic sand

STONECRAFT
collection



Touch for Virtual



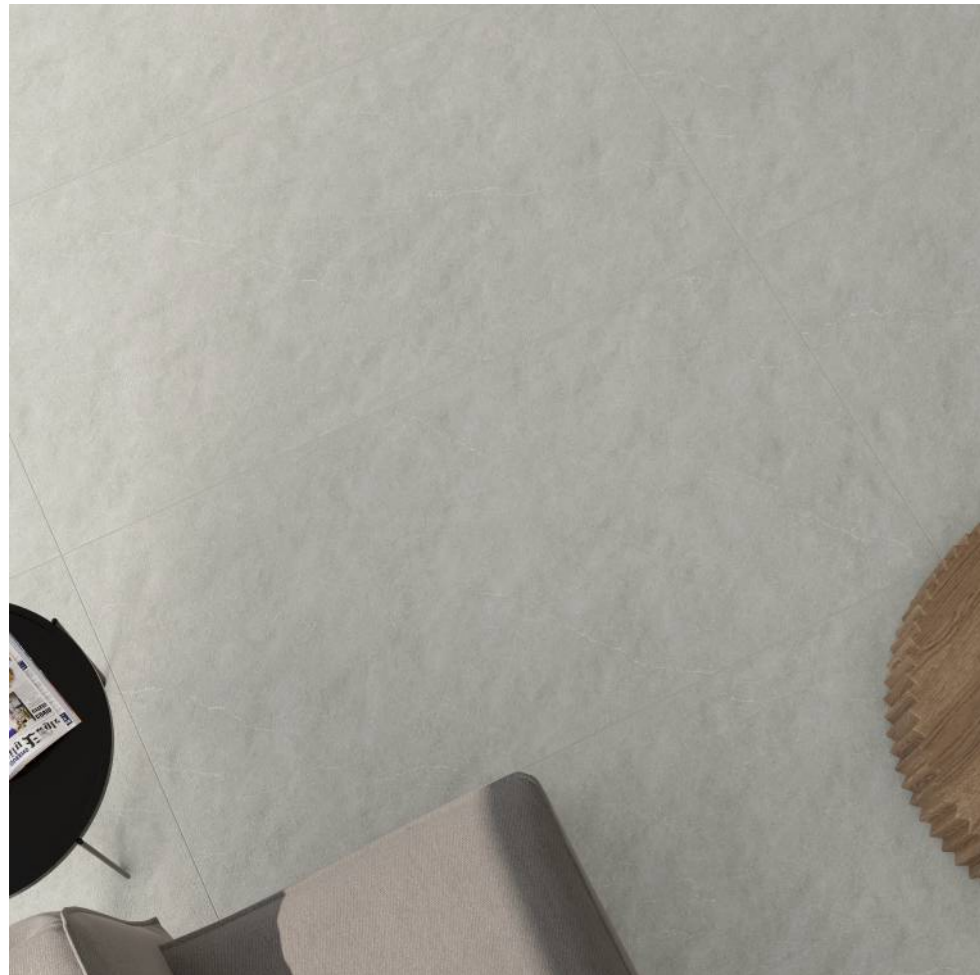


**tectonic
grey**

800x1600mm | Carving + Punch Surface | 04 Random

tectonic grey

STONECRAFT
collection



Touch for Virtual
360°





**tectonic
gris**

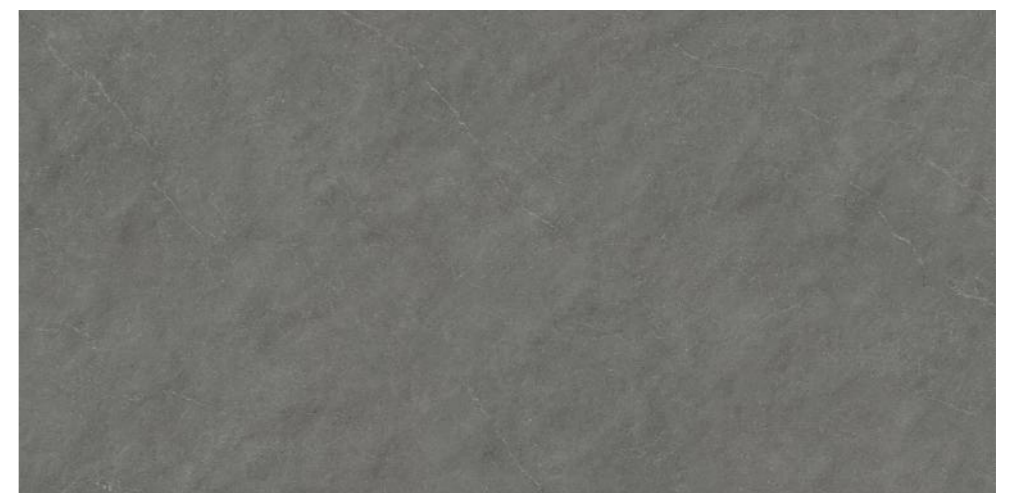
800x1600mm | Carving + Punch Surface | 04 Random

tectonic gris

STONECRAFT
collection



Touch for Virtual



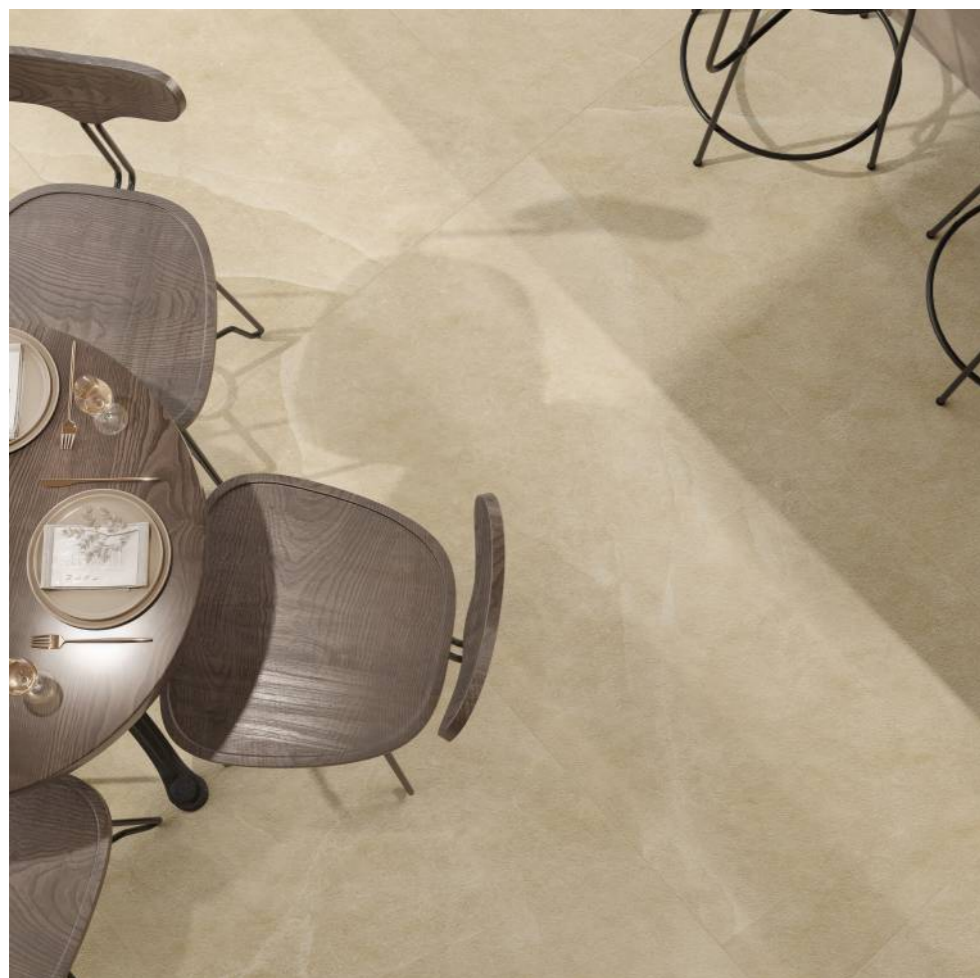


**matrium
peach**

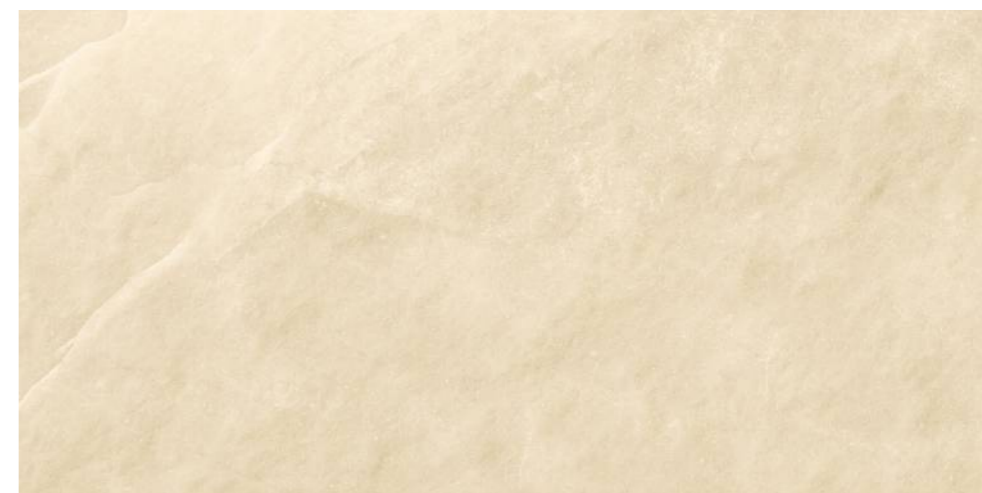
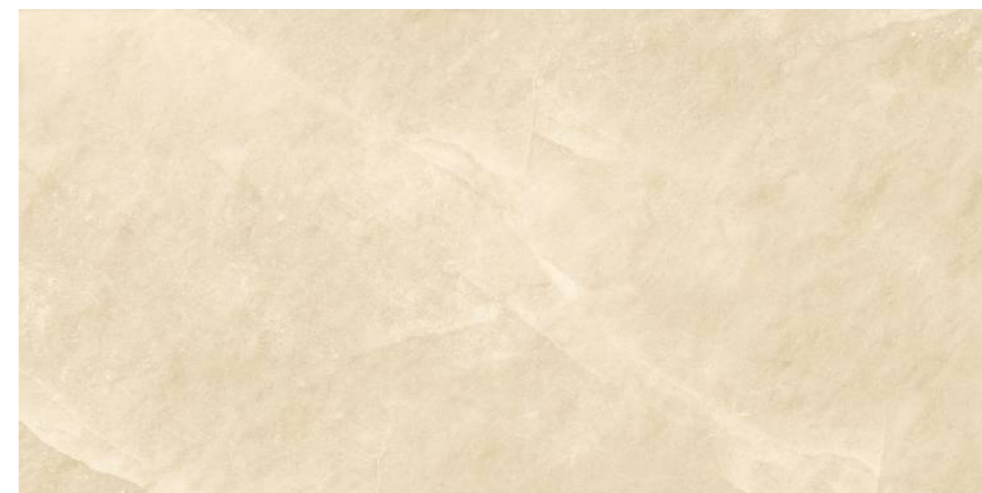
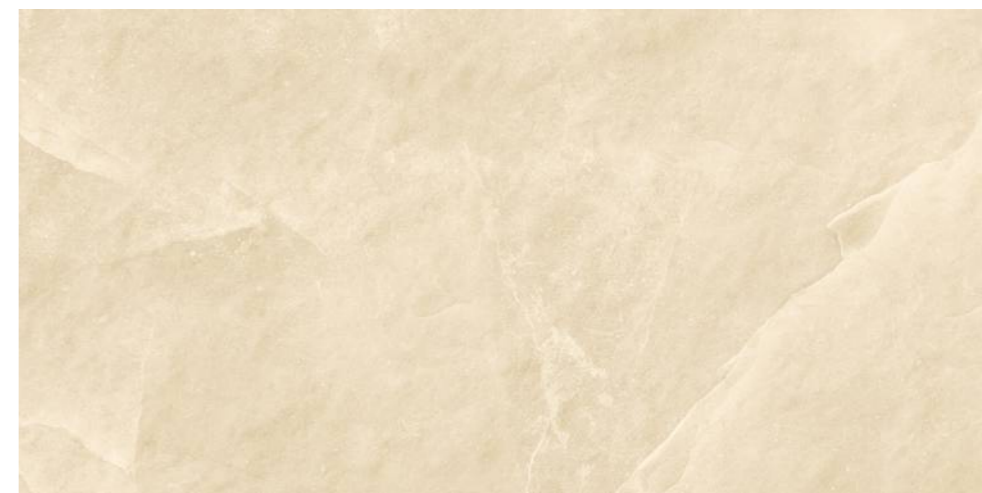
800x1600mm | Carving + Punch Surface | 04 Random

matrium peach

STONECRAFT
collection



Touch for Virtual
360°





**matrium
caramel**

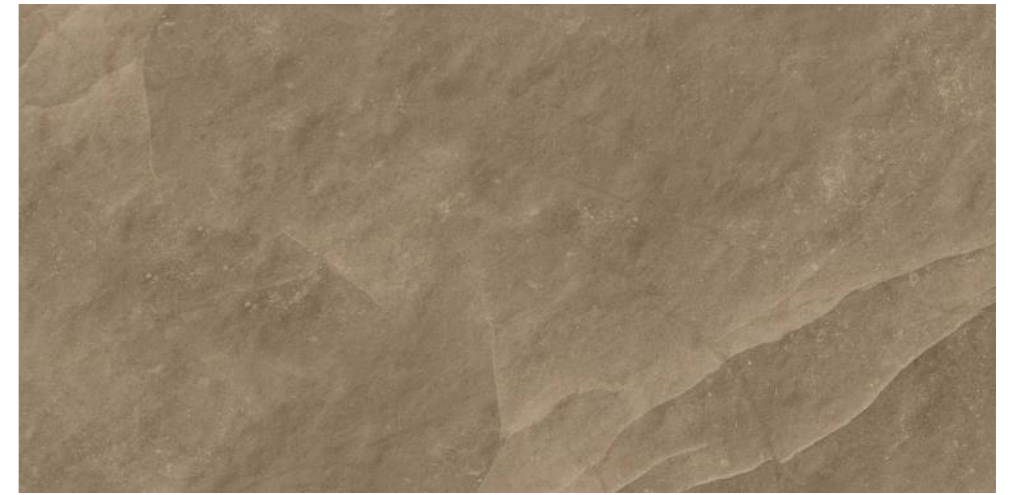
800x1600mm | Carving + Punch Surface | 04 Random

matrium caramel

STONECRAFT
collection



Touch for Virtual





**matrium
nacar**

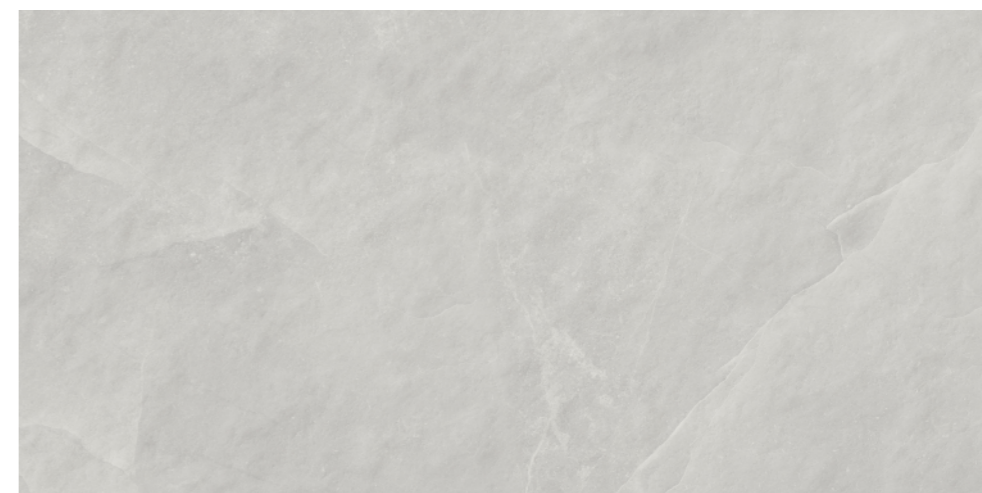
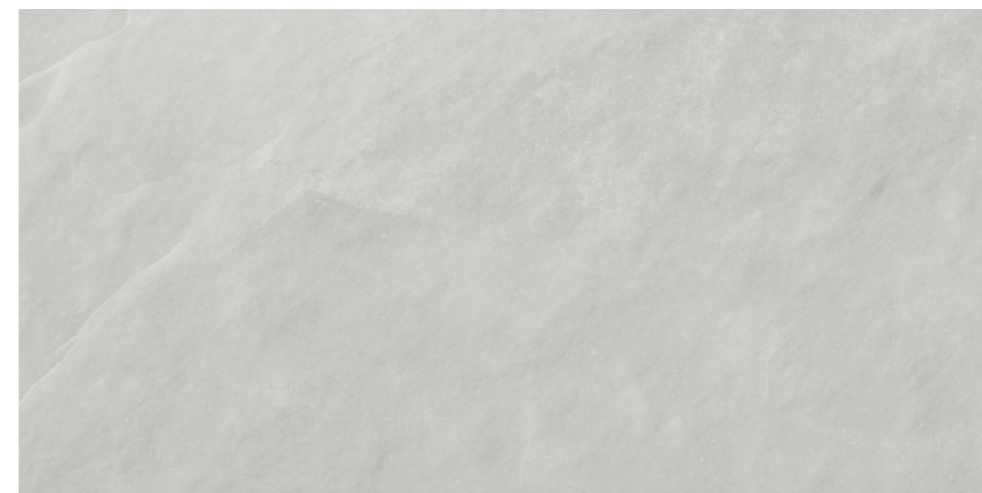
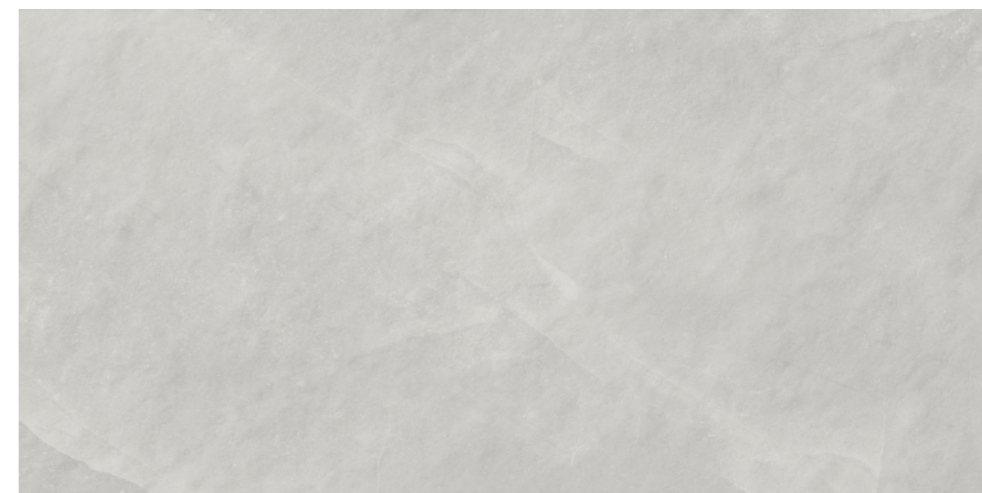
800x1600mm | Carving + Punch Surface | 04 Random

matrium **nacar**

STONECRAFT
collection



Touch for Virtual





**matrium
slate**

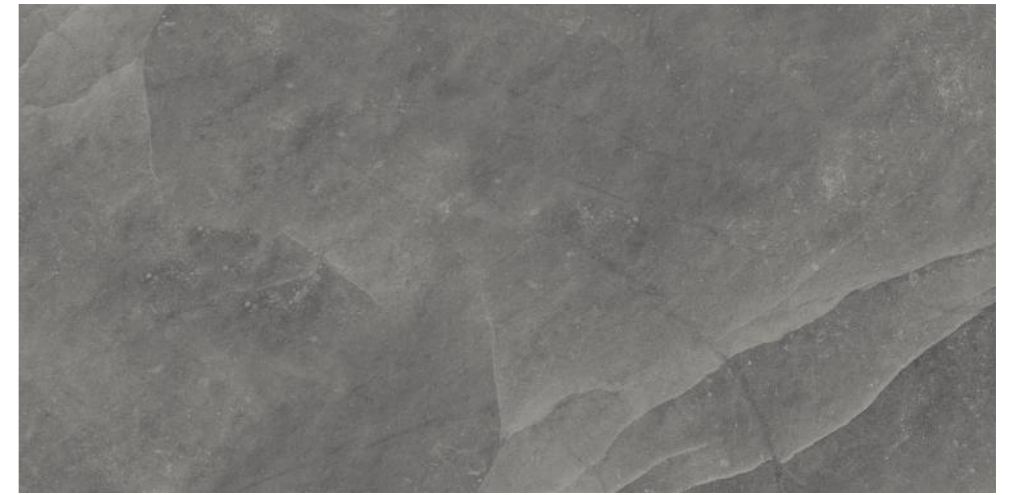
800x1600mm | Carving + Punch Surface | 04 Random

matrium slate

STONECRAFT
collection



Touch for Virtual
360°





**matrium
blu**

800x1600mm | Carving + Punch Surface | 04 Random

matrium **blu**

STONECRAFT
collection



Touch for Virtual
360°





lopato+
cotta
punch



We design living
consider
the **environment**



**iceland
cielo**

800x1600mm | Carving + Punch Surface | 04 Random

iceland **cielo**

STONECRAFT
collection



Touch for Virtual
360°





**iceland
aqua**

800x1600mm | Carving + Punch Surface | 04 Random

iceland aqua

STONECRAFT
collection



Touch for Virtual
360°





**cotta
silver**

800x1600mm | Carving + Punch Surface | 04 Random

cotta silver

STONECRAFT
collection



Touch for Virtual
360°





**cotta
grafito**

800x1600mm | Carving + Punch Surface | 04 Random

cotta grafito

STONECRAFT
collection



Touch for Virtual
360°





**cotta
verde**

800x1600mm | Carving + Punch Surface | 04 Random

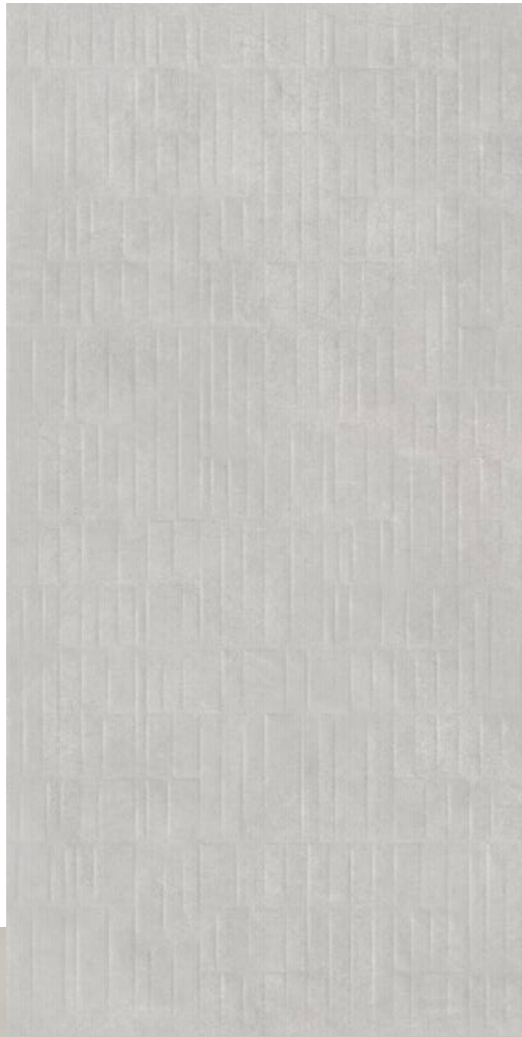
cotta verde

STONECRAFT
collection



Touch for Virtual
360°

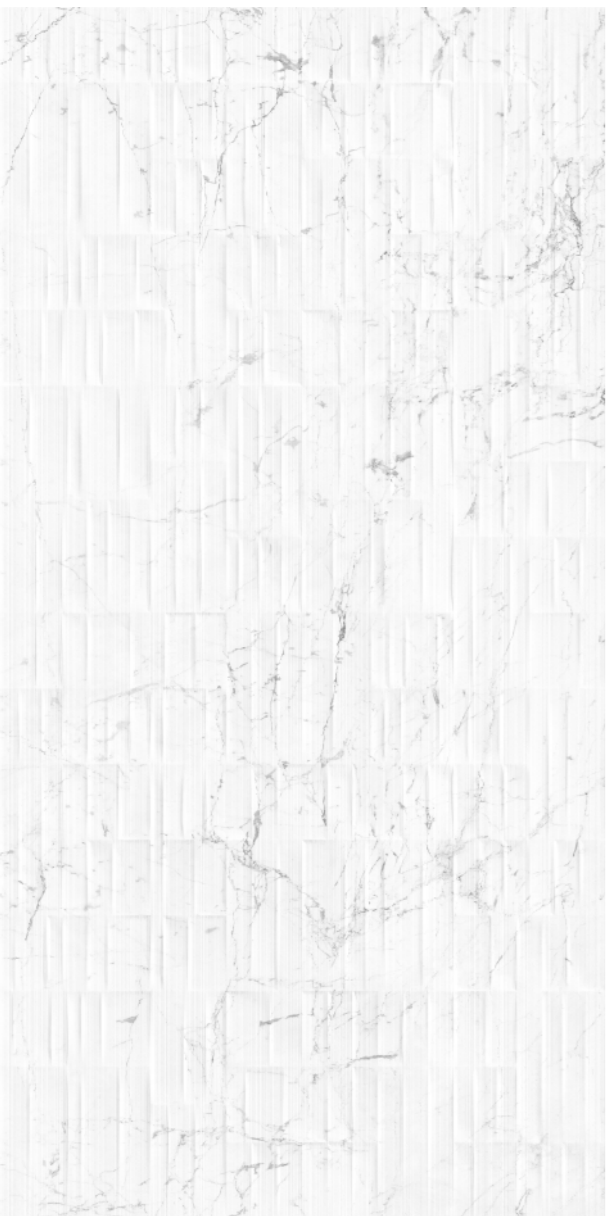




linear
punch



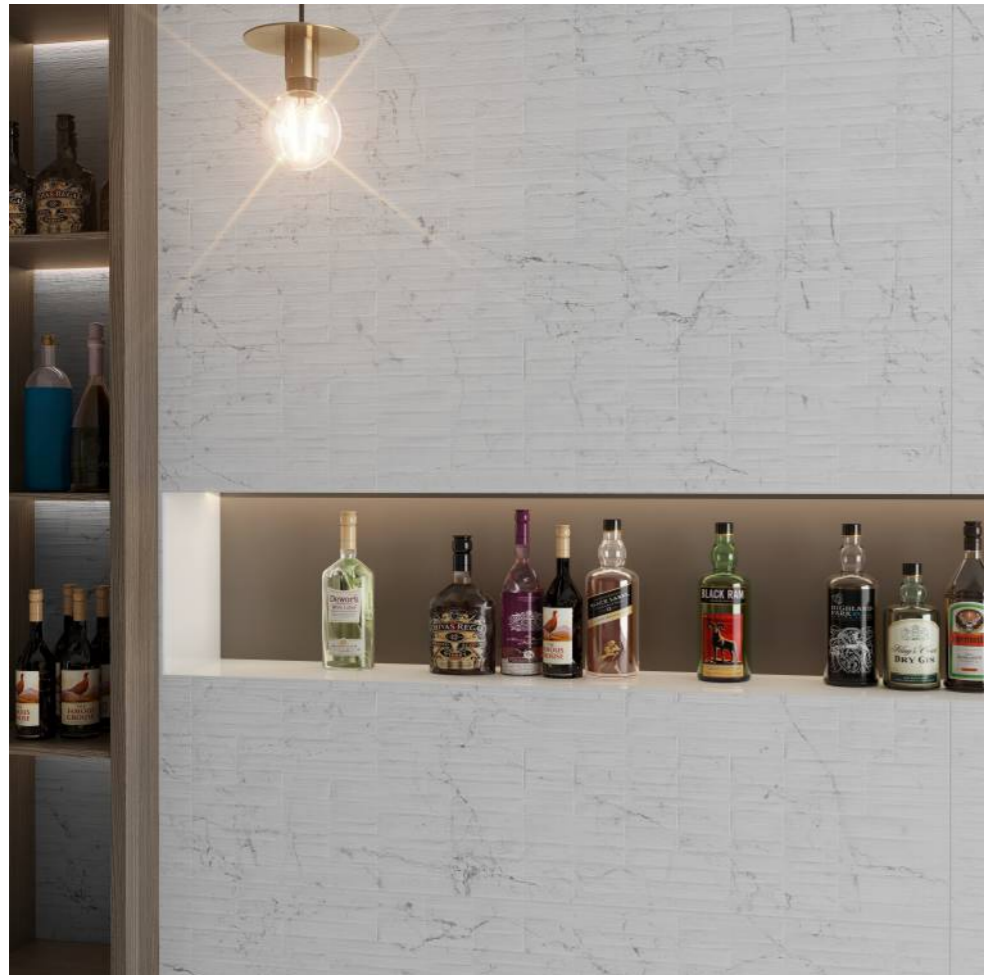
transform your
room into a
trendy space



**rock
apuano
extra**

800x1600mm | Carving + Punch Surface | 06 Random

rock apuano extra

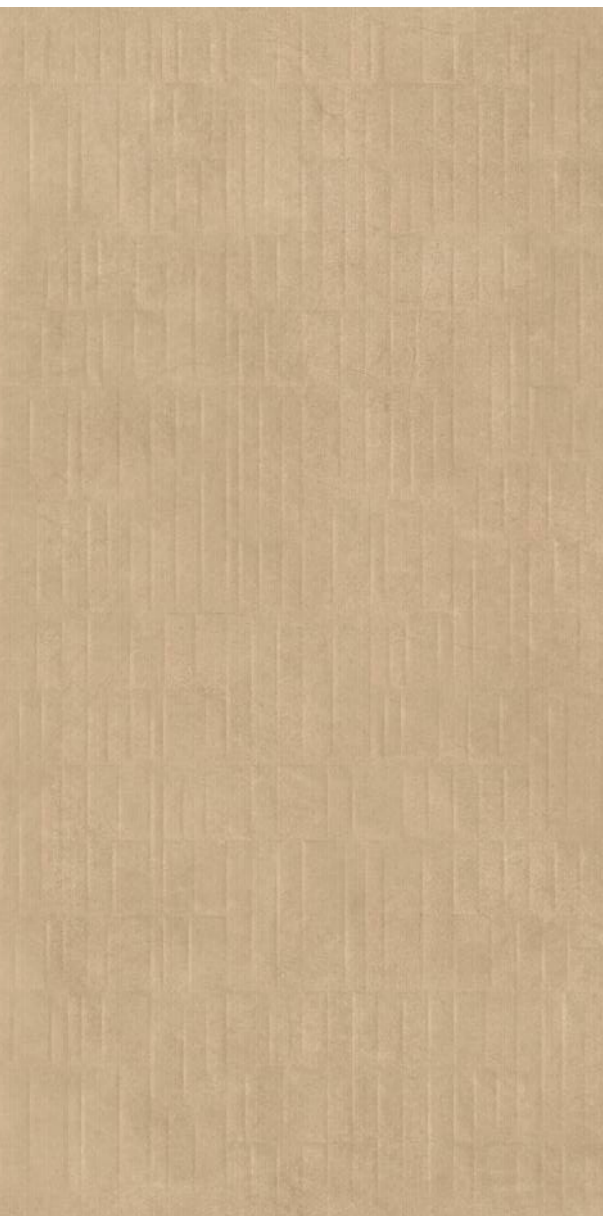


STONECRAFT
collection

Touch for Virtual
360°



Deco apuano extra



**cassero
almond**

800x1600mm | Carving + Punch Surface | 04 Random

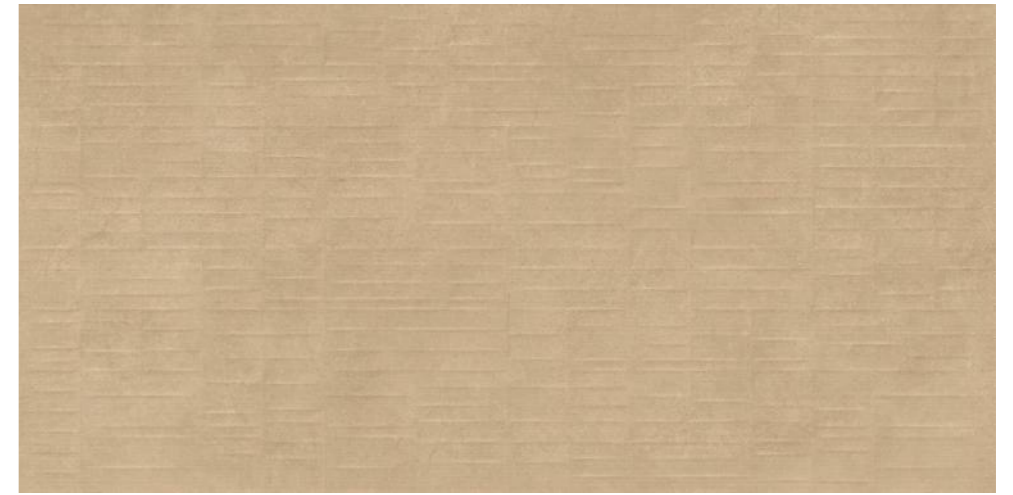
cassero almond



STONECRAFT
collection

Touch for Virtual
360°

Deco cassero almond





cassero
amber

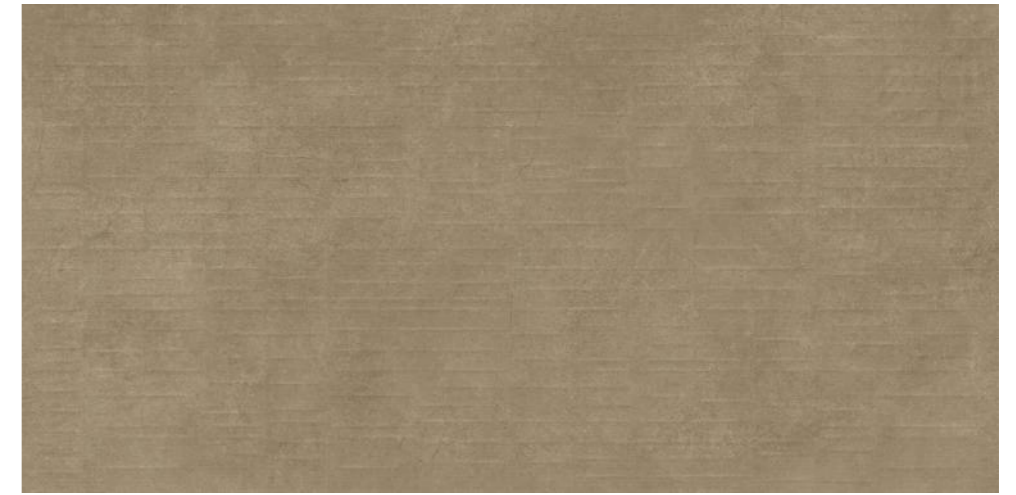
800x1600mm | Carving + Punch Surface | 04 Random

cassero **amber**

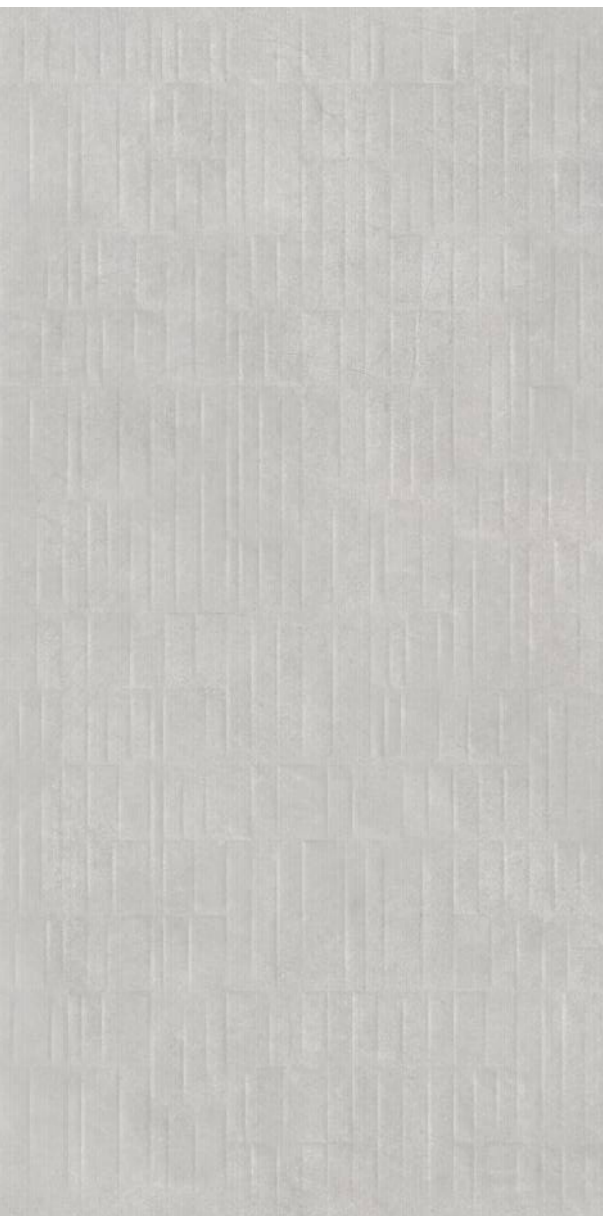


STONECRAFT
collection

Touch for Virtual
360°



Deco cassero amber



**cassero
blanc**

800x1600mm | Carving + Punch Surface | 04 Random

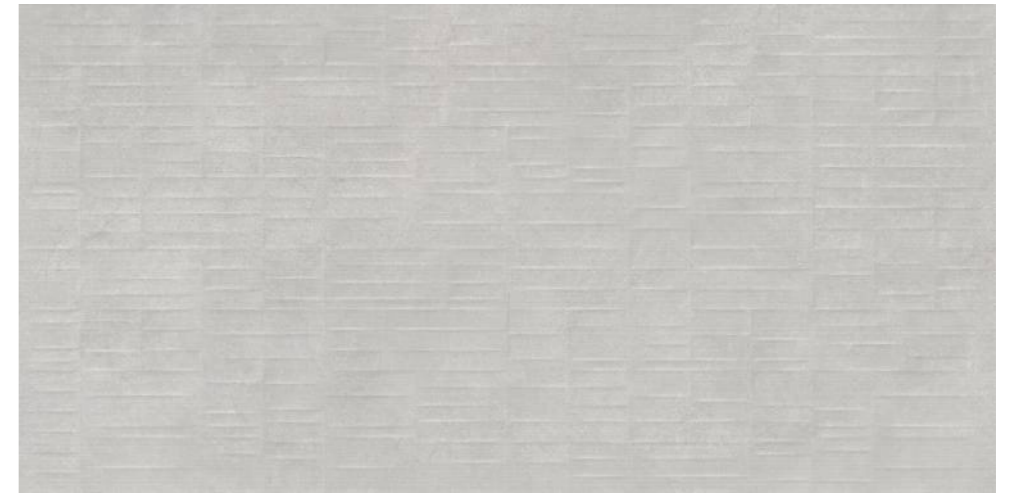
cassero **blanc**

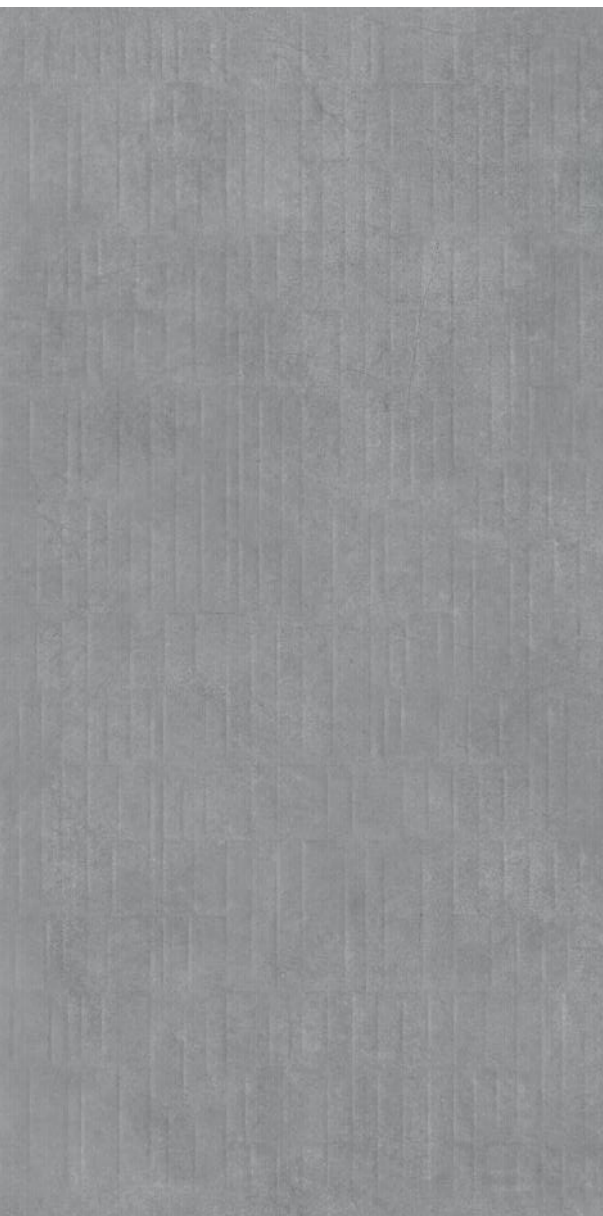


STONECRAFT
collection

Touch for Virtual
360°

Deco cassero blanc





**cassero
pewter**

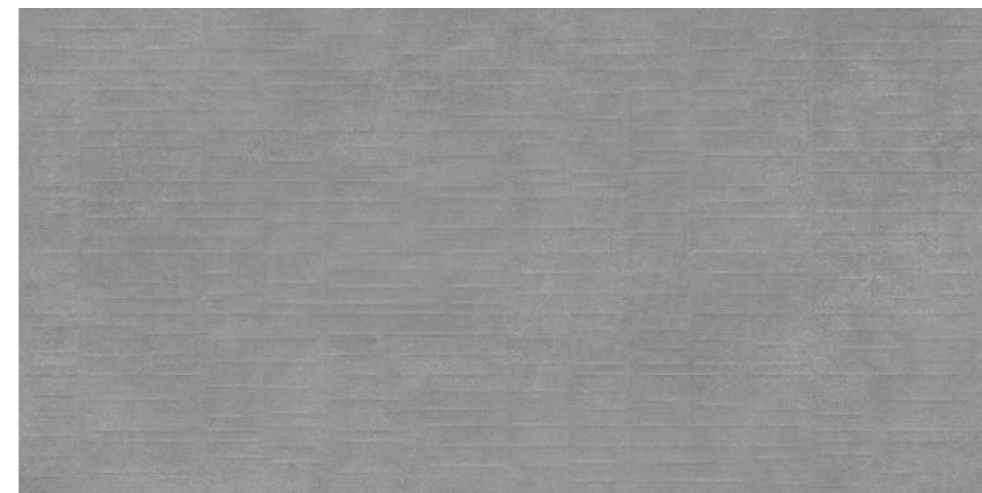
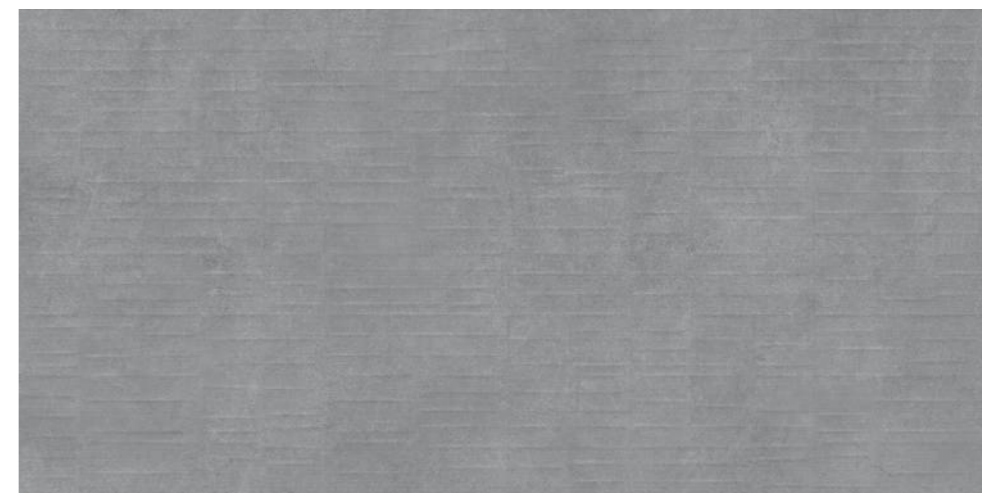
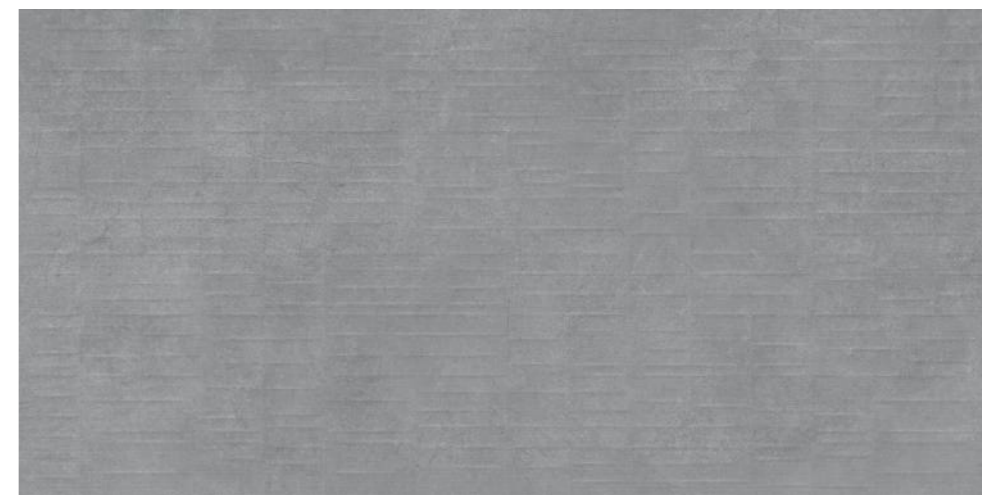
800x1600mm | Carving + Punch Surface | 04 Random

cassero pewter



STONECRAFT
collection

Touch for Virtual
360°



Deco cassero pewter



**cassero
anthracite**

800x1600mm | Carving + Punch Surface | 04 Random

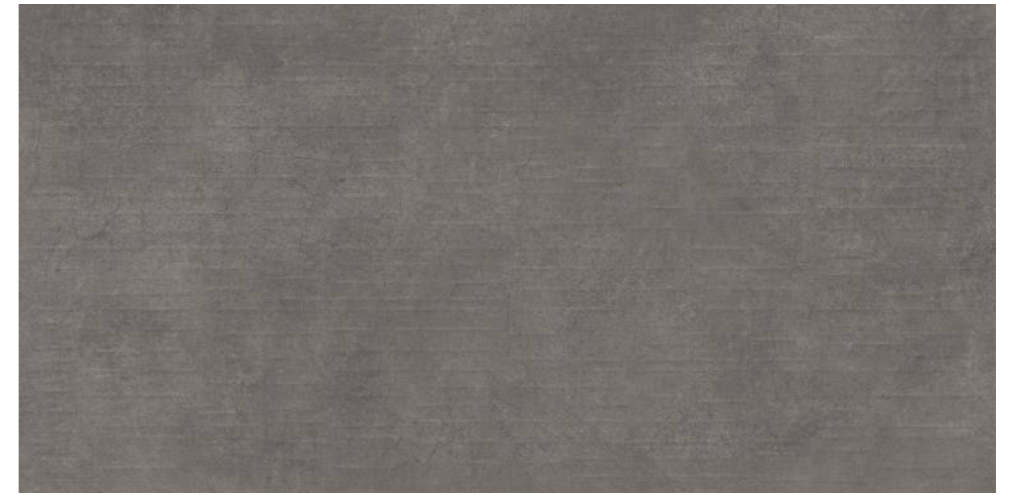
cassero anthracite



STONECRAFT
collection

Touch for Virtual
360°

Deco cassero anthracite



TECHNICAL SPECIFICATION



PACKING DETAILS

| SR. NO | PRODUCT | NOMINAL SIZE | THICKNESS | TILES PER BOX | WEIGHT | COVERAGE AREA |
|--------|-----------------|--------------|-----------|---------------|--------|---------------|
| 1 | VITRIFIED TILES | 800x1600mm | 9mm | 2 | 52 kg | 2.56 Sq. Mtr. |

| CHARACTERISTIC | STANDARD AS PER ISO-13006/EN 14411 GROUP BIa | MEAN VALUE OF POLISHED GVT | MEAN VALUE OF RUSTIC GVT | TEST METHOD |
|--|--|----------------------------|-----------------------------|--------------|
| REGULATORY PROPERTIES | | | | |
| Deviation in length & width | ±0.5 % | ±0.1 % | ±0.1 % | ISO-10545-2 |
| Deviation in thickness | ±5.0 % | ±4.0 % | ±4.0 % | ISO-10545-2 |
| Straightness in side | ±0.5 % | ±0.1 % | ±0.1 % | ISO-10545-2 |
| Rectangularity | ±0.5 % | ±0.1 % | ±0.1 % | ISO-10545-2 |
| Surface flatness | ±0.5 % | ±0.2 % | ±0.2 % | ISO-10545-2 |
| Color difference | Unaltered | No change | No change | ISO-10545-16 |
| Glossiness | As per mfg | Min 90% | Min 4% | GLOSSOMETER |
| STRUCTURAL PROPERTIES | | | | |
| Water absorption | < 0.50 % | < 0.20 % | < 0.20 % | ISO-10545-3 |
| Apparent density | > 2.0 g/cc | >2.10 g/cc | >2.10 g/cc | DIN 51082 |
| MASSIVE MECHANICAL PROPERTIES | | | | |
| Modulus of rupture | Min. 35 N/mm ² | Min. 40 N/mm ² | Min. 40 N/mm ² | ISO-10545-4 |
| Breaking strength | Min. 1300 N | Min. 2000 N | Min. 2000 N | ISO-10545-4 |
| Impact resistance | As per mfg. | Min. 0.55 | Min. 0.55 | ISO-10545-5 |
| SURFACE MECHANICAL PROPERTIES | | | | |
| Surface abrasion resistance | As per mfg. | Min. Class-3 | Min. Class-4 | ISO-10545-7 |
| MOH's hardness | As per mfg. | Min. 4 | Min. 5 | EN 101 |
| THERMO HYGROMETRIC PROPERTIES | | | | |
| Frost resistance | No damage | No damage | No damage | ISO-10545-12 |
| Thermal shock resistance | No damage | No damage | No damage | ISO-10545-9 |
| Moisture expansion | Nil | Nil | Nil | ISO-10545-10 |
| Thermal expansion (COE) | Max. 9.0 x 10 ⁻⁶ | Max. 6.5x10 ⁻⁶ | Max. 6.5 x 10 ⁻⁶ | ISO-10545-8 |
| Crazing resistance | As per mfg. | Min. 10 Cycle | Min. 10 Cycle | ISO-10545-11 |
| CHEMICAL PROPERTIES | | | | |
| Chemical resistance | No damage | No damage | No damage | ISO-10545-13 |
| Stain resistance | Resistant | Resistant | Resistant | ISO-10545-14 |
| SAFETY PROPERTIES | | | | |
| Slip resistance | As per mfg. | >0.40 | >0.40 | ISO-10545-17 |
| Fire resistance | As per mfg. | Fire proof | Fire proof | N. A. |
| Lead & Cadmium given off by glazed tiles | As per mfg. | Does not yield Pb & Cd | Does not yield Pb & Cd | ISO-10545-15 |